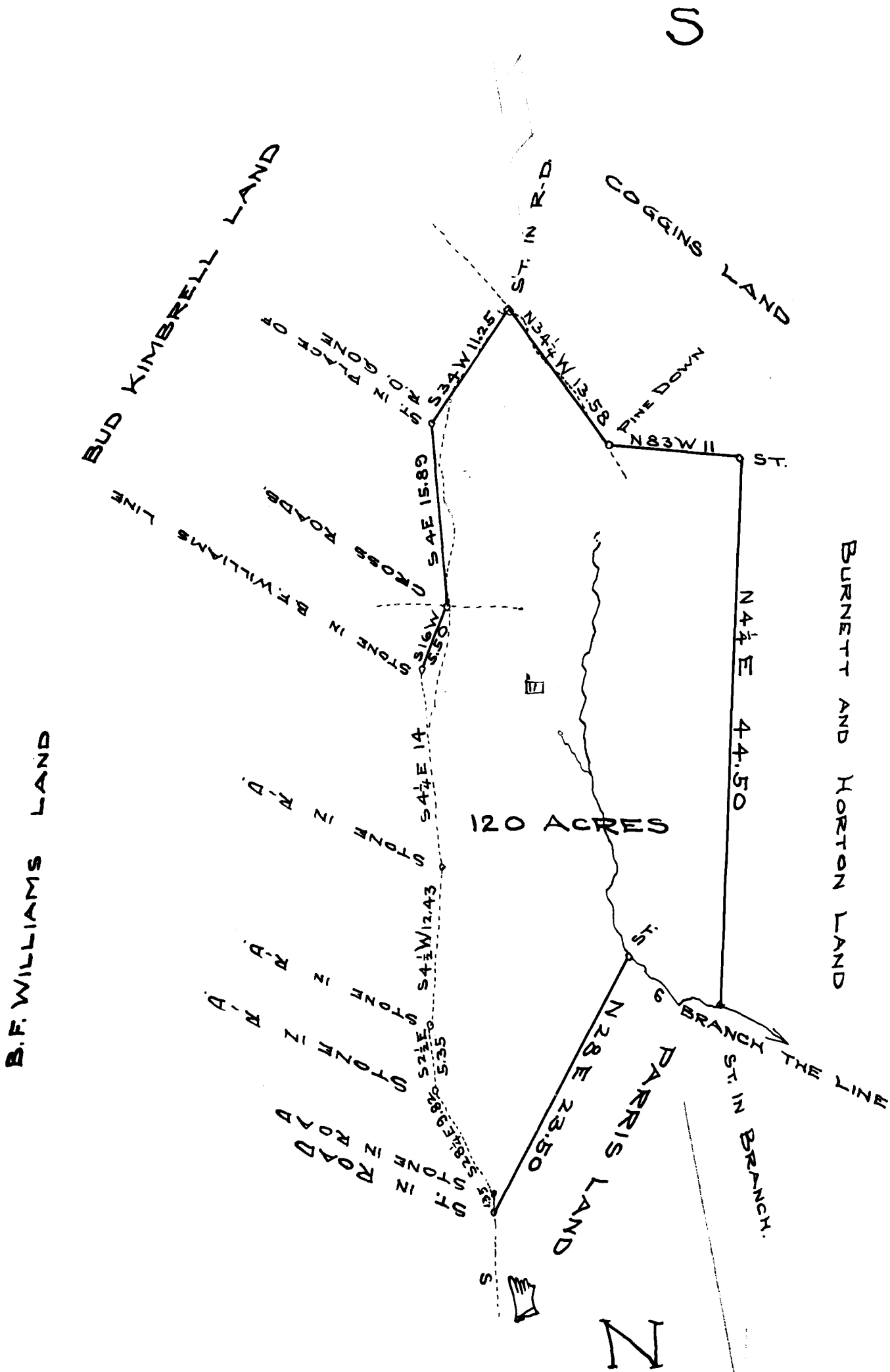


EX PARTE
DOC KIMBRELL

SCALE 10 CH. PER IN.



THIS MAP REPRESENTS 120 ACRES OF LAND NOW BELONGING TO DOC KIMBRELL, SURVEYED FOR HIM MAY THE 12-1897

H. PARRIS, C.E.

REGISTERED, CERTIFIED & EXAMINED NOV. 2-1911.