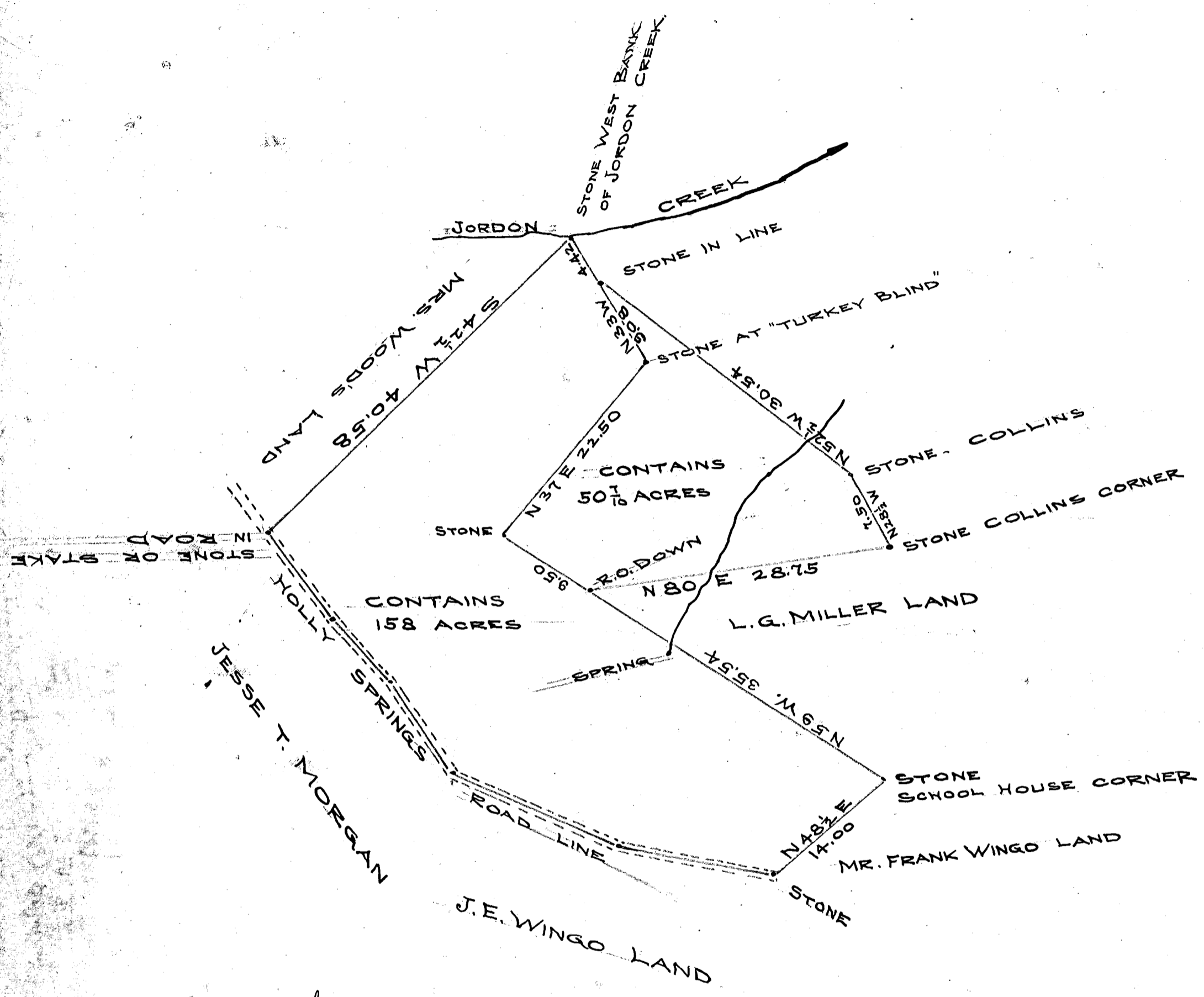


66

EX PARTE
MRS. M.M. LOYLESS



State of South Carolina }
Spartanburg County }

By request of J. F. Loyless Esq. I have resurveyed above tract of land and find it contains 158 acres in the ~~Mrs~~ Makin tract and 50 ⁷/₁₀ acres in the John Gary Evans tract having such metes & bounds as set forth above
Surveyed Mch. 18th 1909

Geo. H. Camp
D. S.

Registered, Certified & Examined November 2nd 1911.