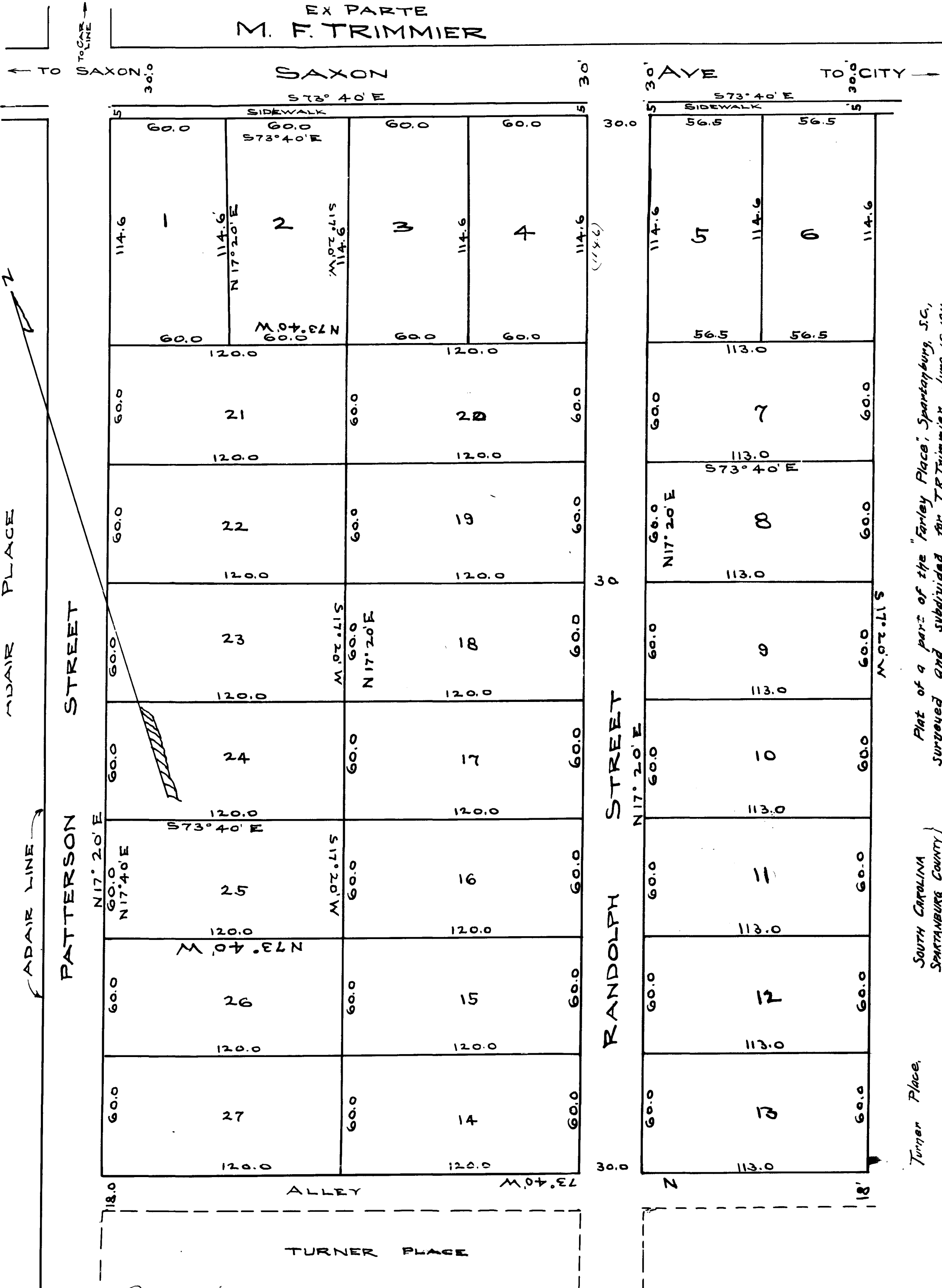


EX PARTE  
M. F. TRIMMIE



Plat of a part of the "Farley Place", Spartanburg, S.C.,  
 Surveyed and subdivided for T.R. Trimmie June 19, 1911.  
 SCALE 1" = 40'  
 Paul H. Nash  
 Surveyor.

SOUTH CAROLINA  
 SPARTANBURG COUNTY

Turner Place,

Registered, Certified & Examined Jan'y. 17-1912