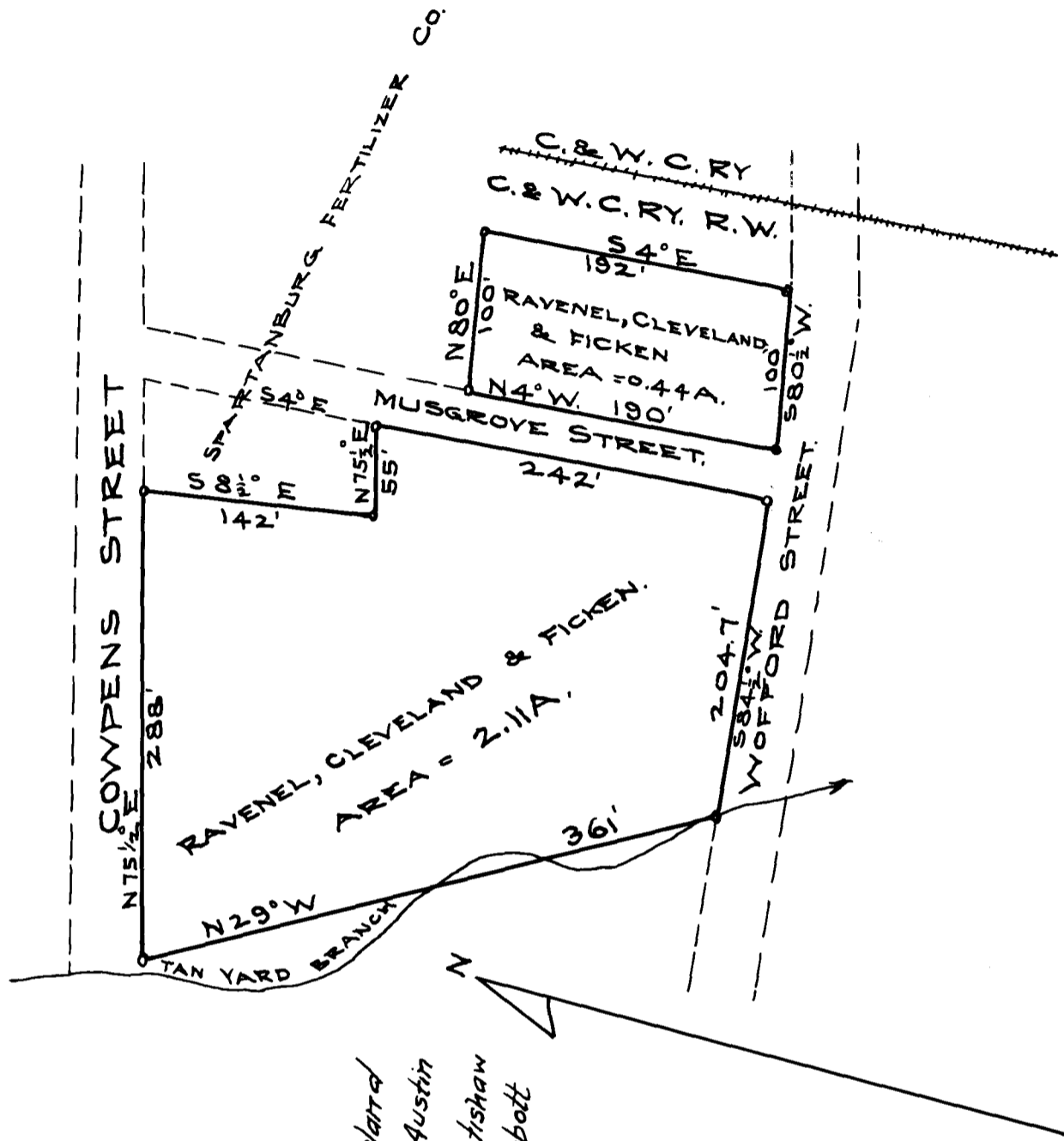


EX PARTE  
GREENVILLE, SPARTANBURG & ANDERSON RY. CO.

EXHIBIT "A"



J.B. Cleveland  
 Francis Austin  
 Lucy Muntshaw  
 Mrs. N.E. Abbott

NOTE:  
 SEE DEED BOOK "5-D" PAGE 489.

Conveyed by  
 H.E. Ravenel  
 John B. Cleveland  
 John F. Ficken

G. S. & A. Ry. Co.  
 Spartanburg Terminal Property.  
 Scale 1" = 100' - May 23, 1912.