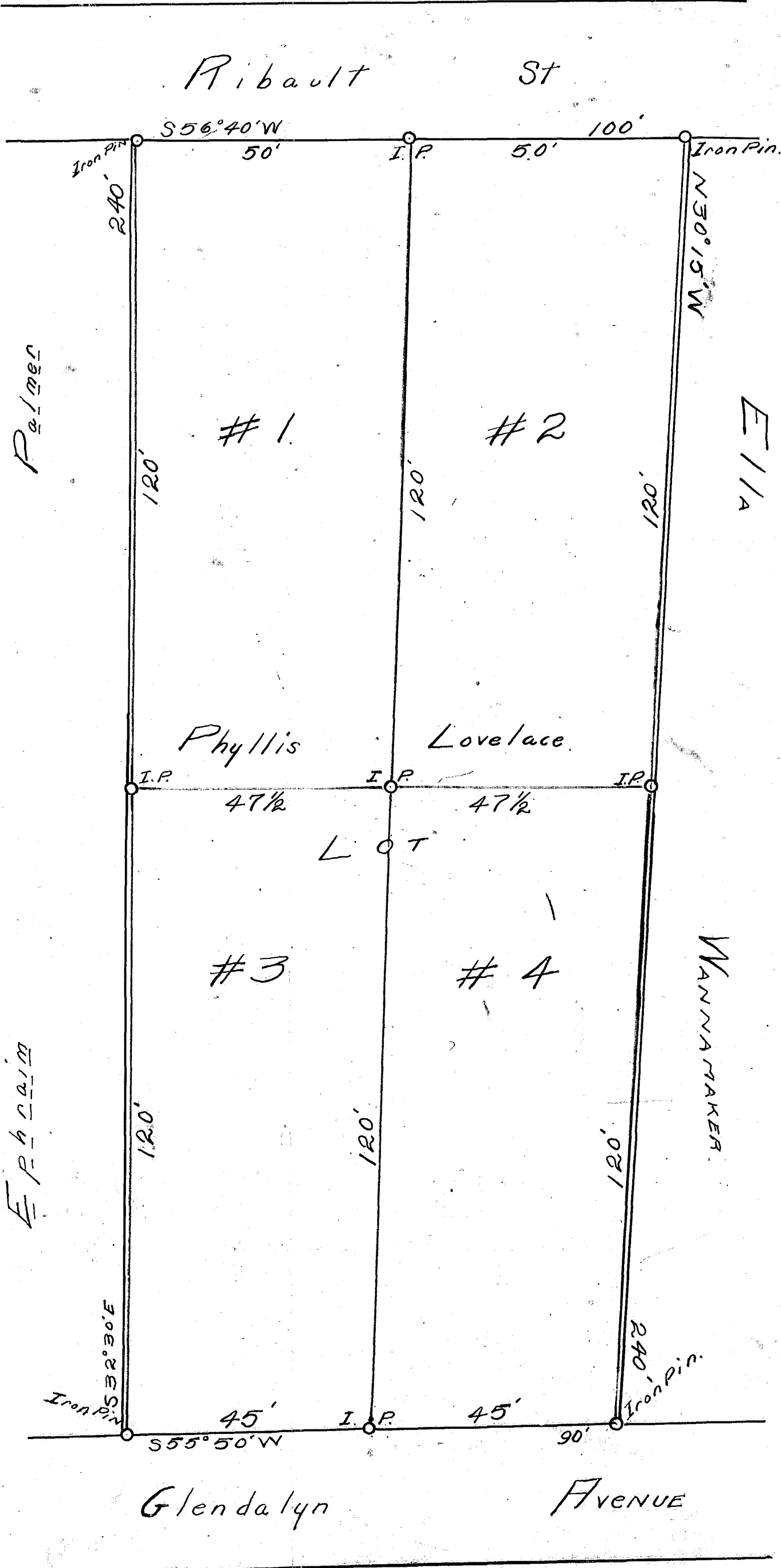


EX PARTE
PHYLLIS LOVELACE.



State of South Carolina } I hereby certify the annexed plat to be correct in
Spartanburg County } course and distance of a certain lot or parcel of land in State and
county aforesaid between Glendalyn Avenue and Ribault St. Surveyed
and subdivided into four (4) Lots Aug 28 1911.
Scale 20' per inch

Thos W. Radshaw
Engin & Surv.

Registered, Certified & Examined April 13 1912.