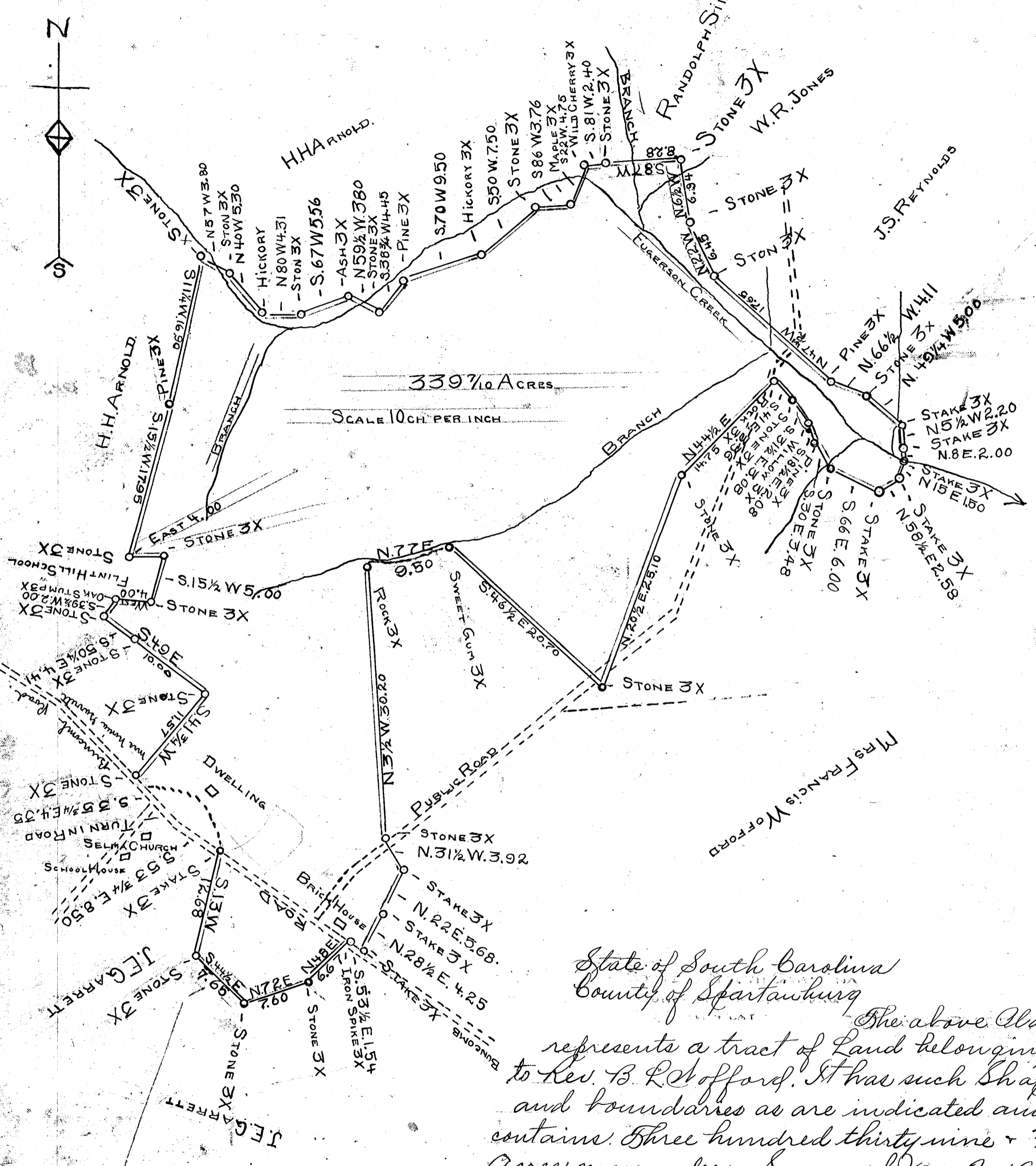


V 93

EX PARTE
REV. B. L. WOFFORD.



State of South Carolina
 County of Spartanburg

The above Plat represents a tract of Land belonging to Rev. B. L. Wofford. It has such Shape and boundaries as are indicated and contains Three hundred thirty nine & 7/10 Acres more or less. Surveyed Jan. 2, 1912

S. G. Anderson,
 Surveyor.

Registered, certified & Examined 27th of March 1912.