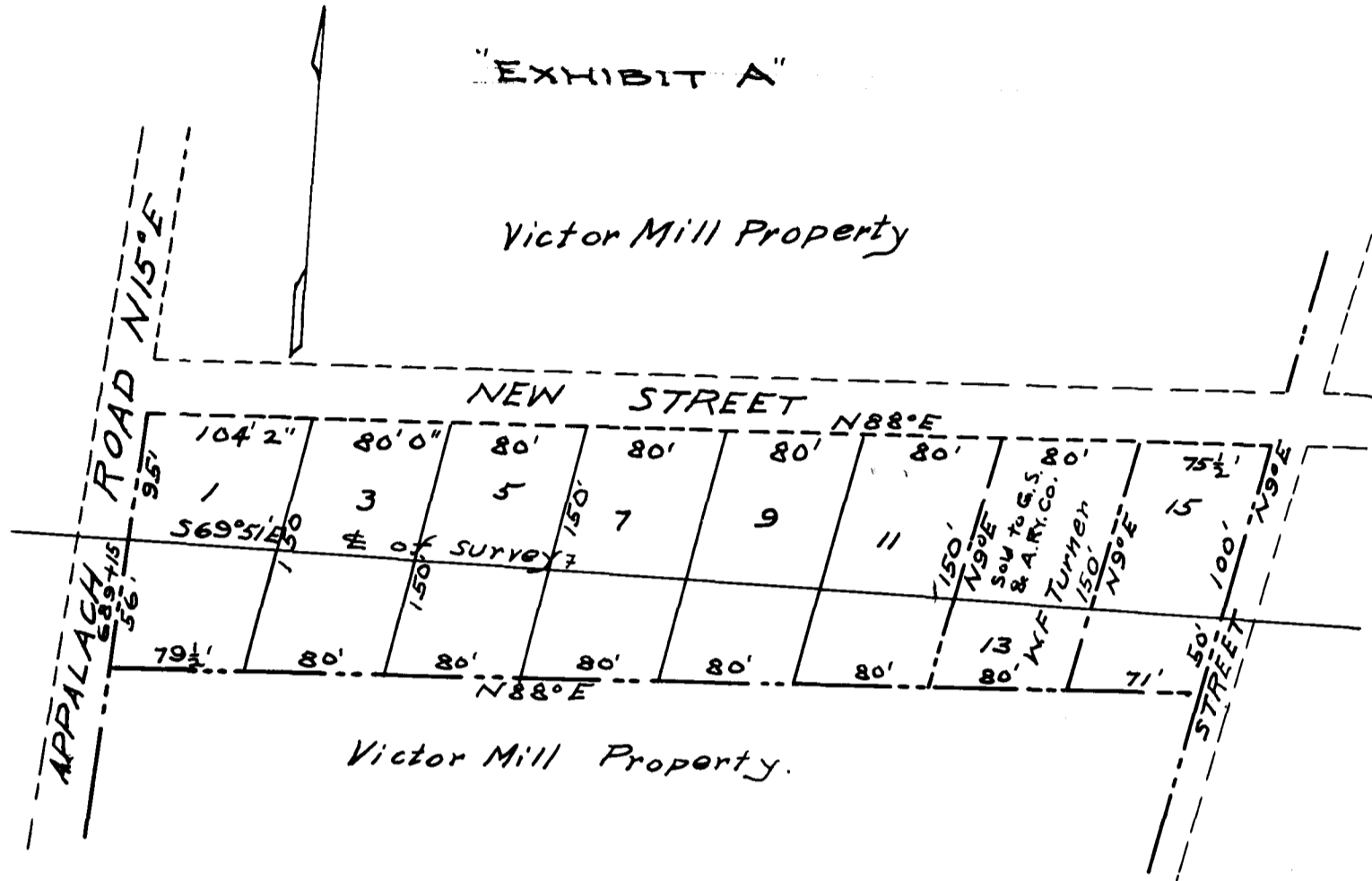


EX PARTE  
G. S. & A. RY. CO.



NOTE:  
SEE DEED BOOK "5-F" PAGE "55"

MAP  
THE G. S. & A. Ry. Co.  
Showing Property Bought from the  
Victor Mill and Lot owned by  
W. F. Turner

The above Property Lies just of  
Green, Spartanburg County, S.C.

Scale 1" = 100'

Office of Chief Engineer

July 23, 1912.

Registered, Certified & Examined August 14, 1912