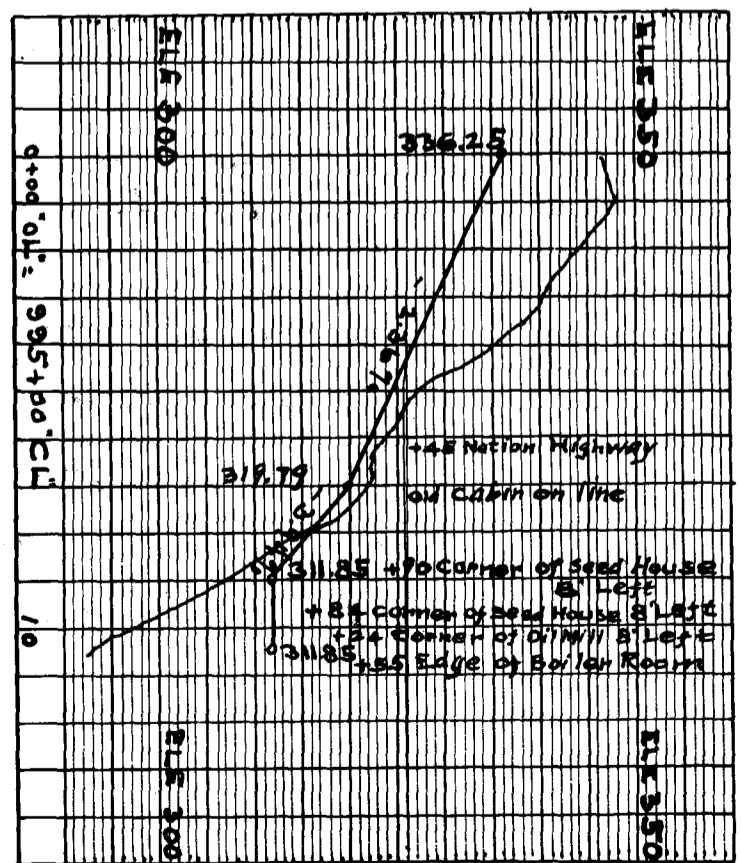
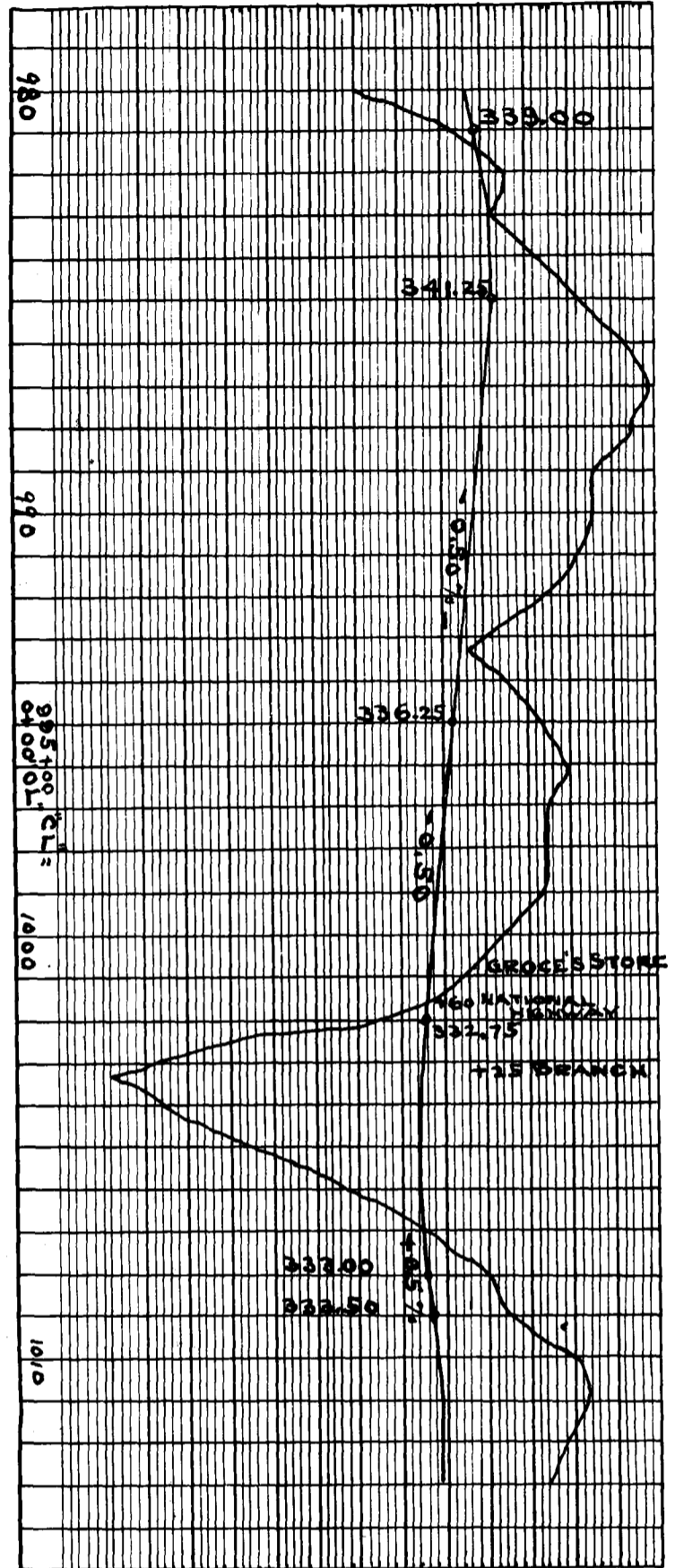
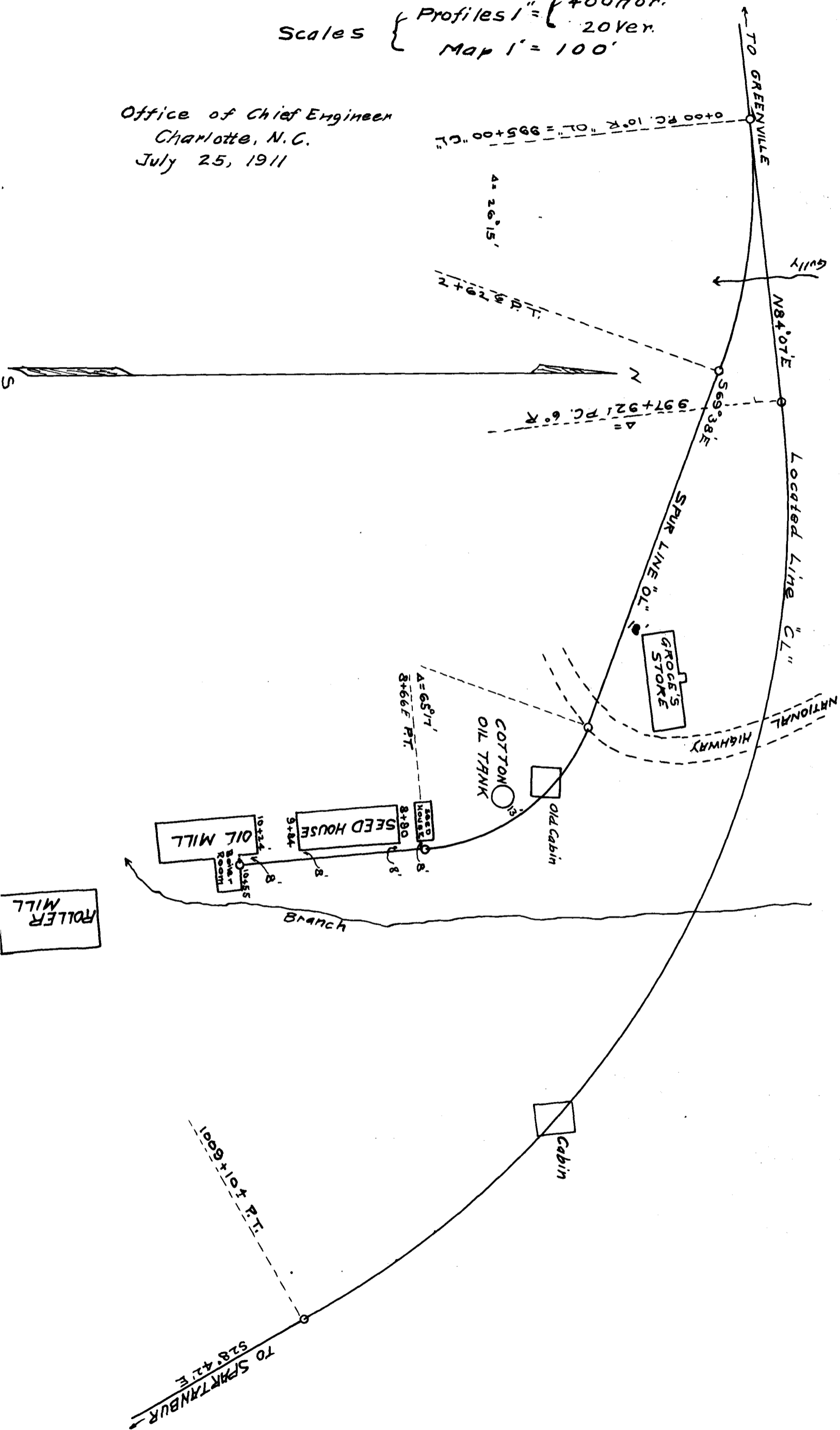


THE G. S. & A. RYCO.  
LOCATED SPUR TO GROCE'S  
OIL MILL

113

Scales { Profiles 1" = 400' Hor.  
          20 ver.  
          Map 1" = 100'

Office of Chief Engineer  
Charlotte, N.C.  
July 25, 1911



Registered, Certified & Examined June 19-1912