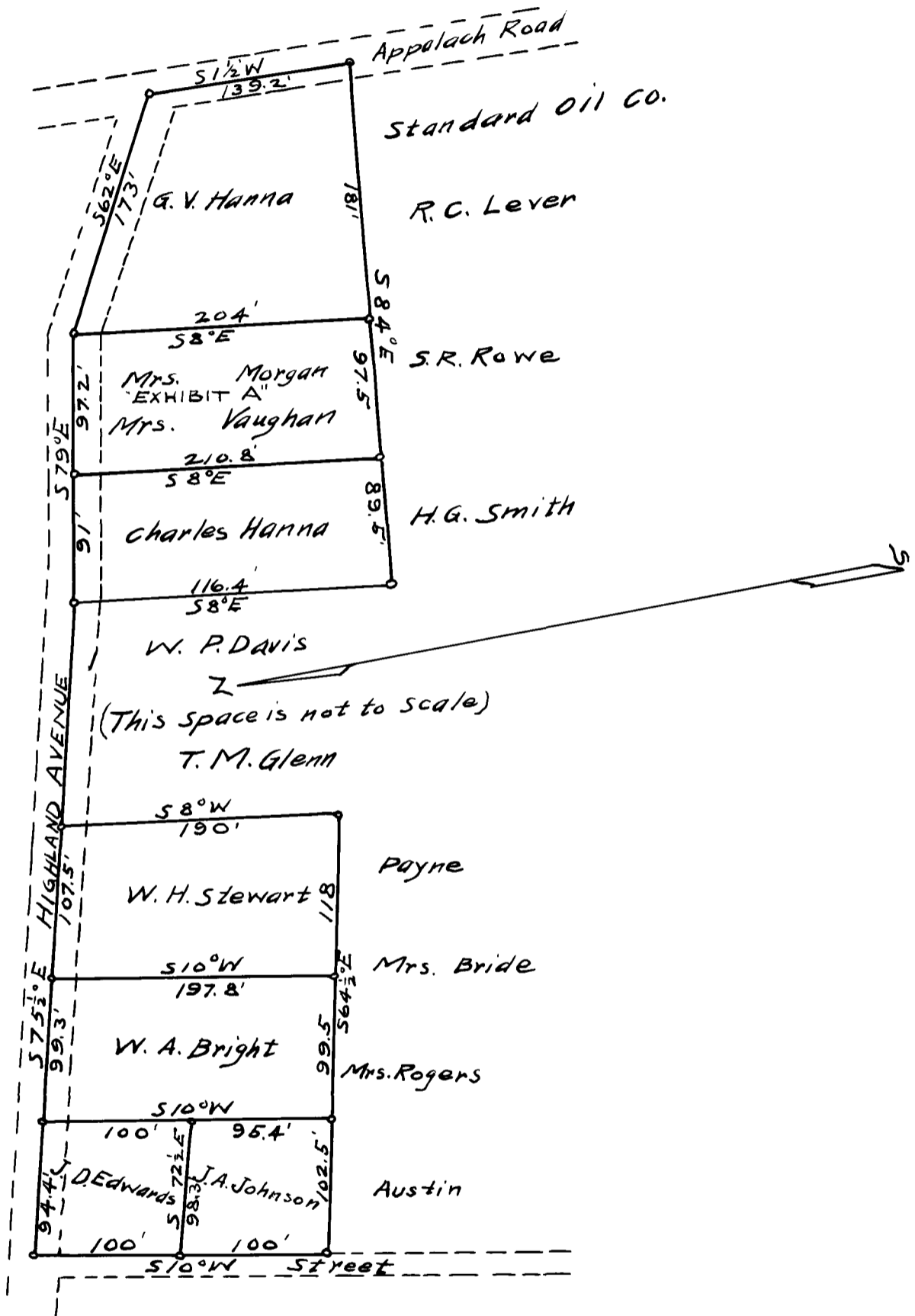


EX PARTE

G., S. & A. RY. CO.

NOTE:

SEE DEED BOOK "J-F" PAGE "52"



THE G. S. & A. RY. CO.
 PROPERTY PURCHASE AT GREER, S.C.
 SOUTH OF HIGHLAND AVENUE BETWEEN
 S10°W STREET & APPALACH ROAD
 Scale 1 in = 100 ft.

Office of Chief Engineer Charlotte, N.C.
 July 6, 1912.

Registered, certified & Examined August 12, 1912