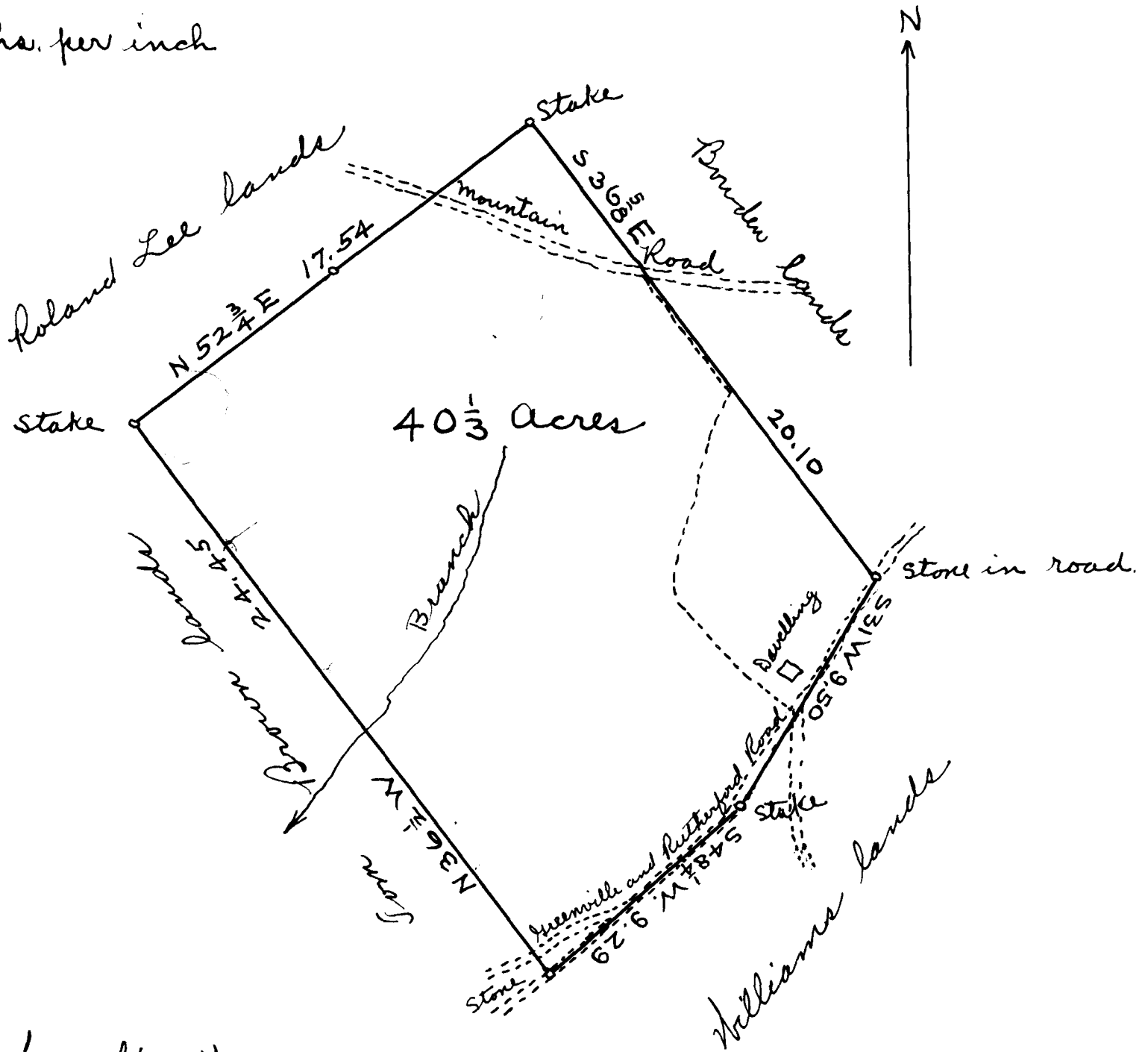


EX PARTE
L. J. GOSNELL

Scale of 5 chs. per inch



State of South Carolina }
Spartanburg County }

The above plat correctly represents a tract of land belonging to Luther Gosnell. It is situated in Spartanburg County, State of South Carolina and lies near the town of Landrum

It was sold by J. D. Norman, master to E. D. Foster and from E. D. Foster to Luther Gosnell.

Resurveyed by me Apr. 18th 1910

M. E. Johnson.

Registered, Certified & Examined August 21-1912