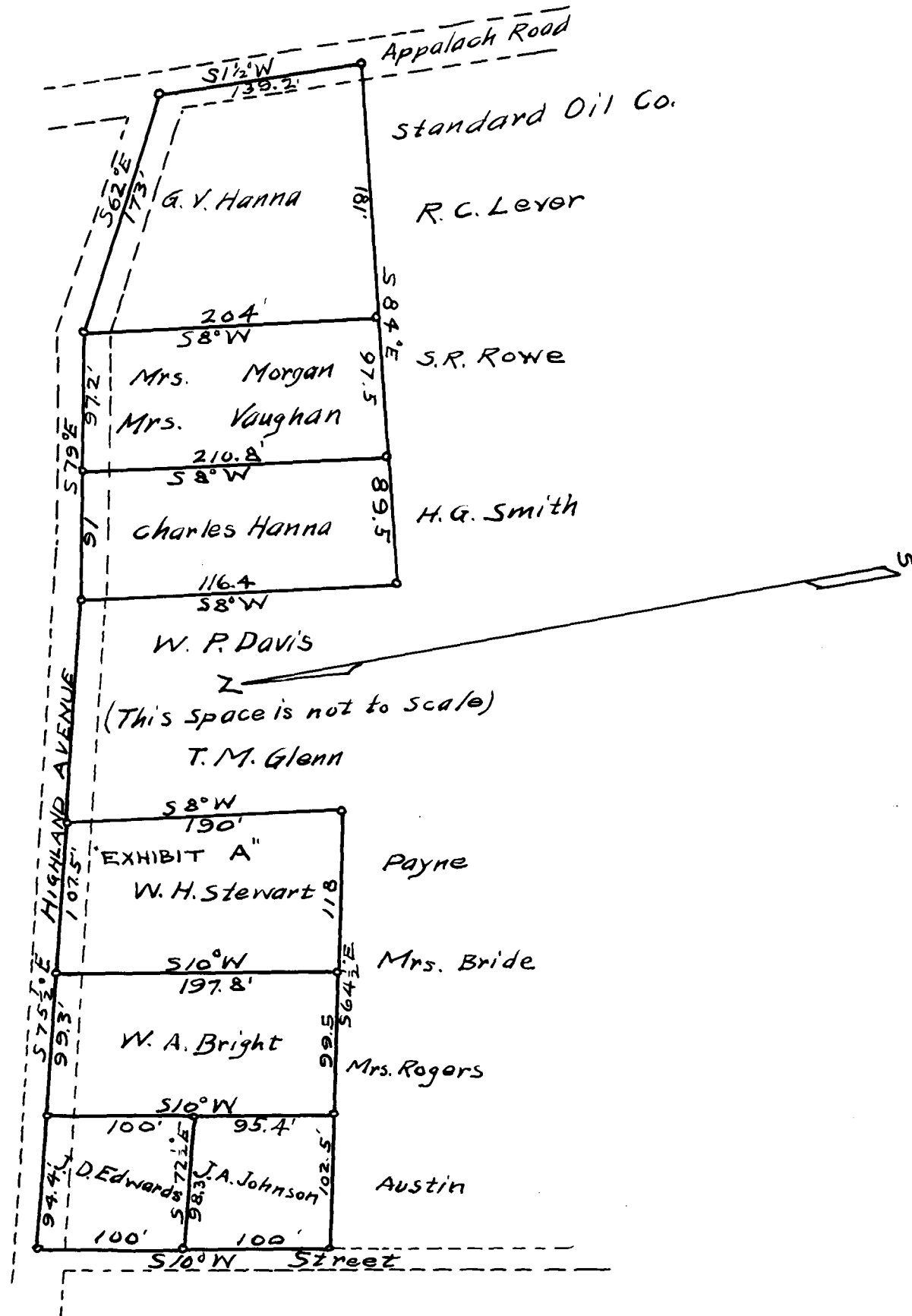


EX PARTE  
G. S. & A. RY. CO

NOTE:  
SEE DEED BOOK "5-F" PAGE "54"



THE G. S. & A. RY. CO.  
PROPERTY PURCHASE AT GREER, S. C.  
SOUTH OF HIGHLAND AVENUE BETWEEN  
S10°W STREET & APPALACH ROAD  
Scale 1 in = 100 ft

Office of Chief Engineer Charlotte, N. C.  
July 6, 1912.

Registered, Certified & Examined August 14 - 1912