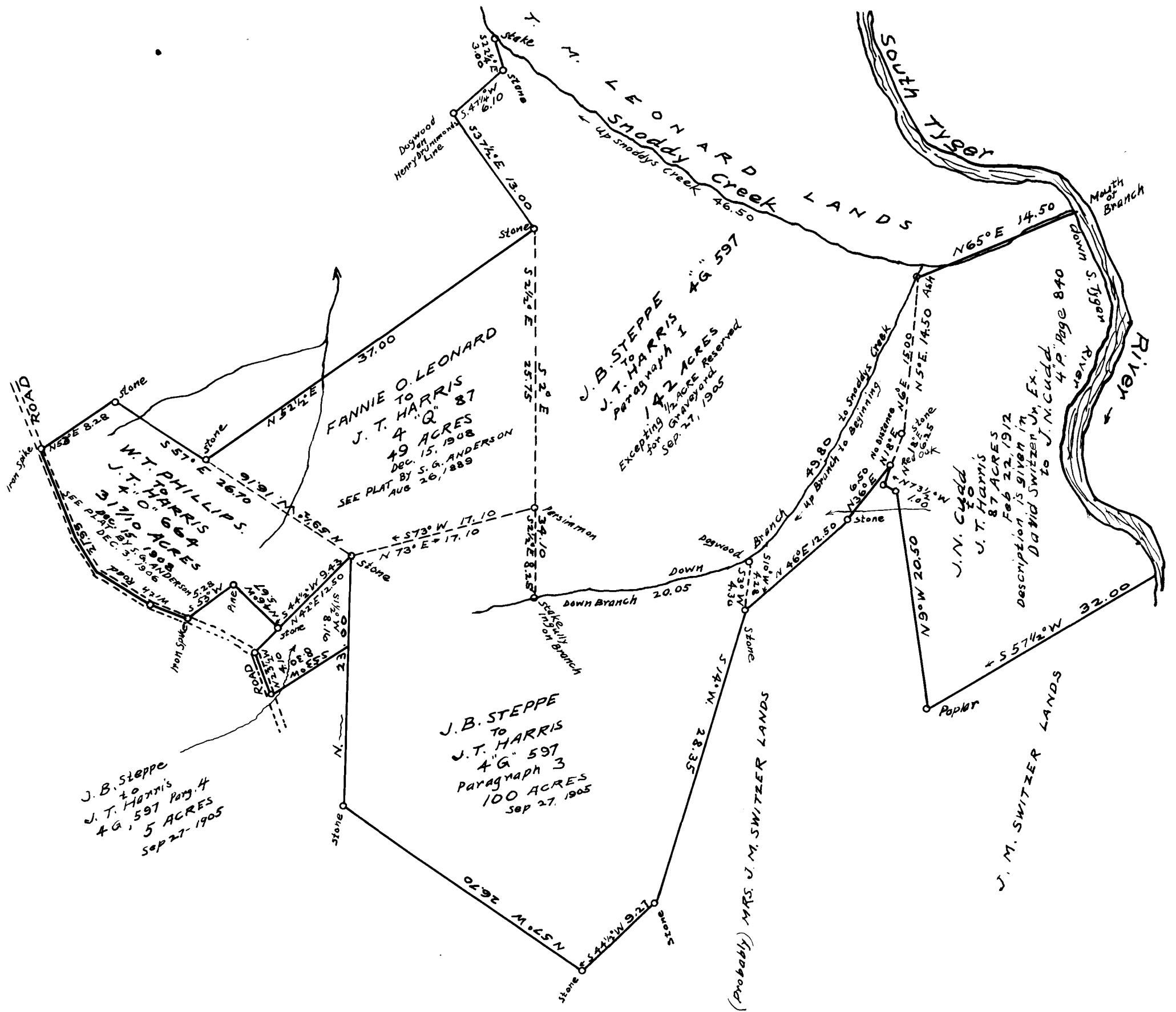


EX PARTE
J. T. HARRIS



PLAT FROM DEEDS,
NOTE - NO SURVEY
PROPERTIES OF J. T. HARRIS
NEAR SWITZER,
SPARTANBURG CO. S. C.
Platted from Deeds May 8, 1912
H. STRIBLING, C.E.

Cited Totals
5.00
31.70
49.00
142.00
100.00
87.00
8.00
422.70 Acres

SCALE 1 IN. = 10 CH'S.

Note - Magnetic Bearings Have Meridians of Various Years, Probably 8 to 50 Years.

Registered, Certified & Examined August 22-1912