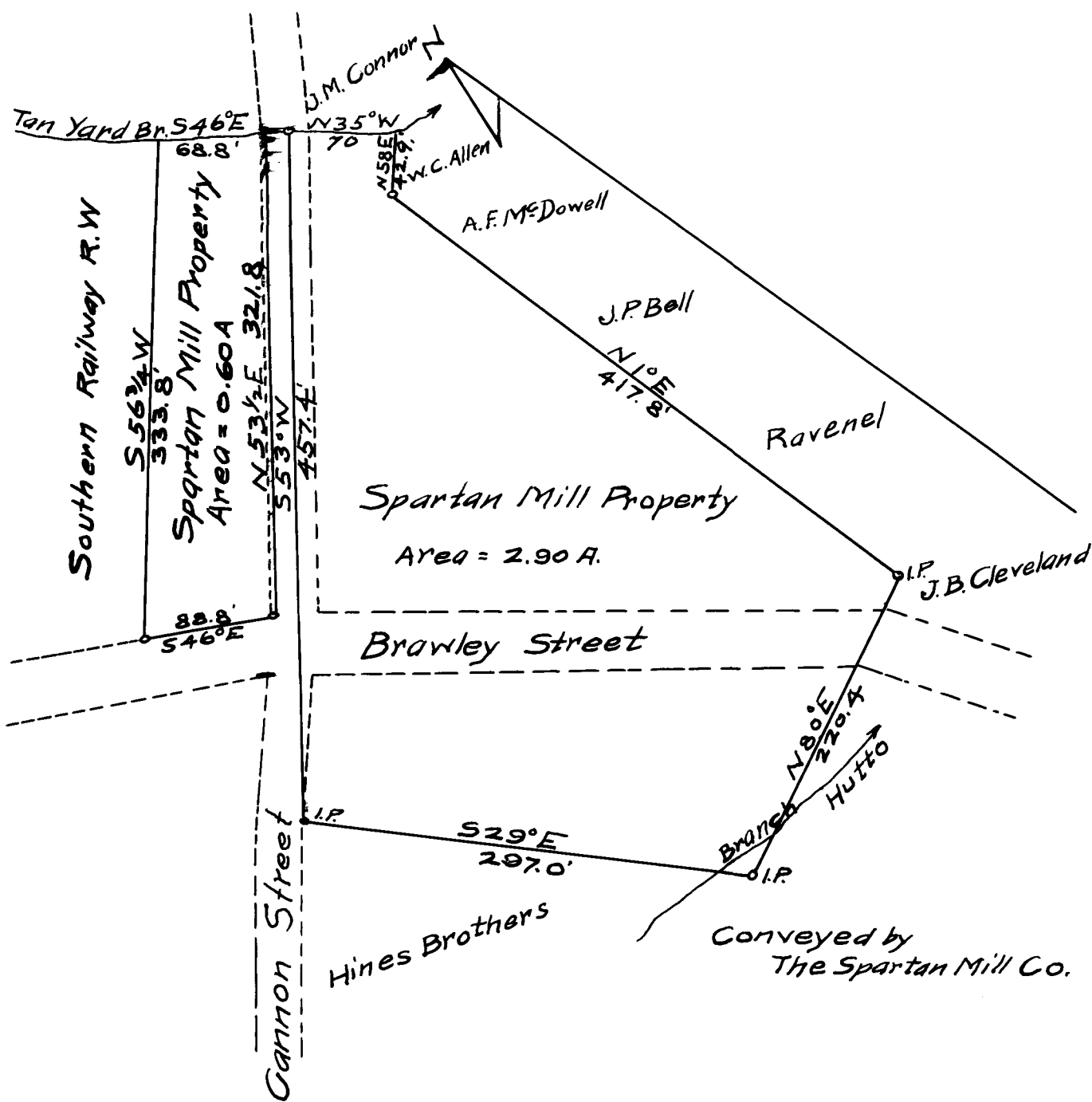


EX PARTE  
G., S. & A. RY. CO.

NOTE:

SEE DEED BOOK "5-F" PAGE "49"

"EXHIBIT A"



G. S. & A. Ry. Co.  
Spartanburg Terminal Property.  
Scale 1" = 100' - May 7, 1912.

Registered, Certified & Examined August 12 - 1912.