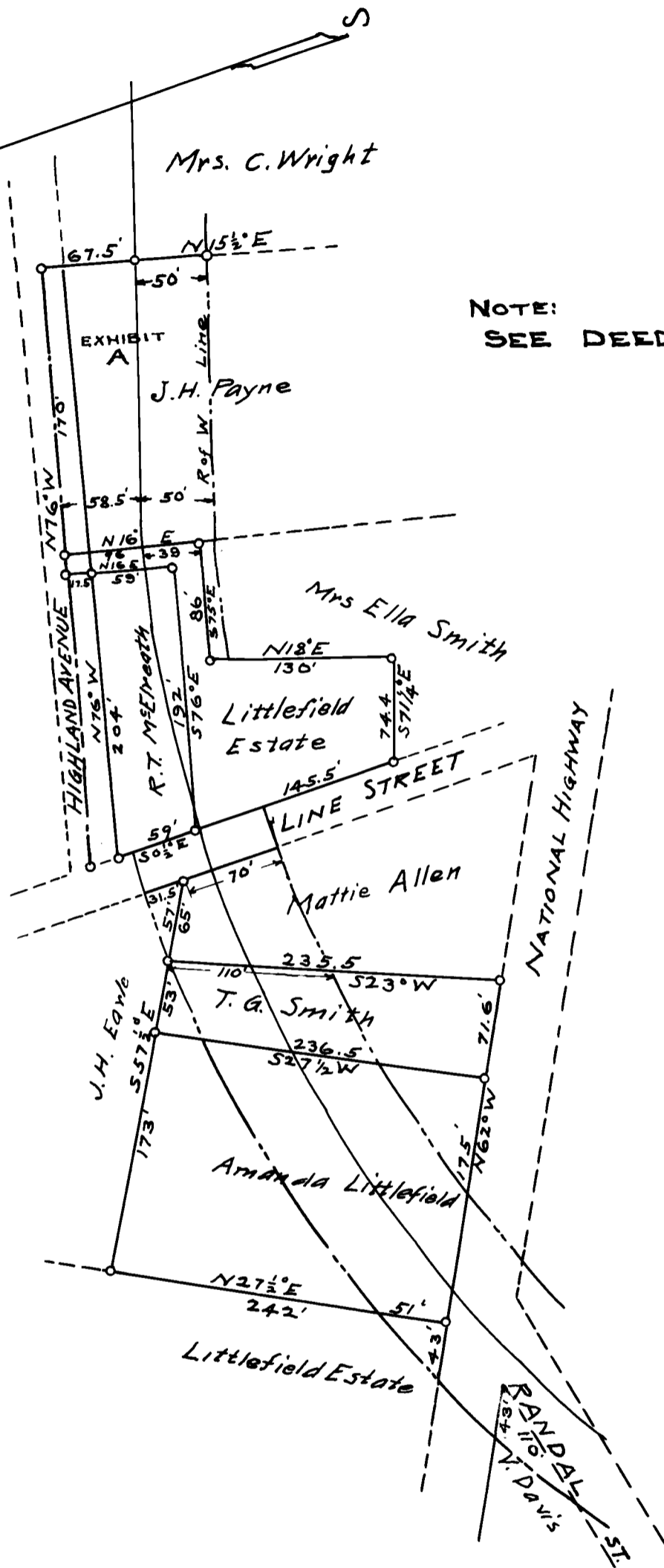


121

EX PARTE  
G., S. & A. RY. CO.



THE G. S. & A. RY. CO.  
 PROPERTY PURCHASE AT  
 GREER, S. C. BETWEEN RANDAL  
 ST. & WEST PROPERTY LINE OF MRS. C. WRIGHT

Scale 1 in = 100 ft.

Office of Chief Engineer Charlotte, N. C.  
 July 6, 1912.

Registered, certified & examined August 12-1912