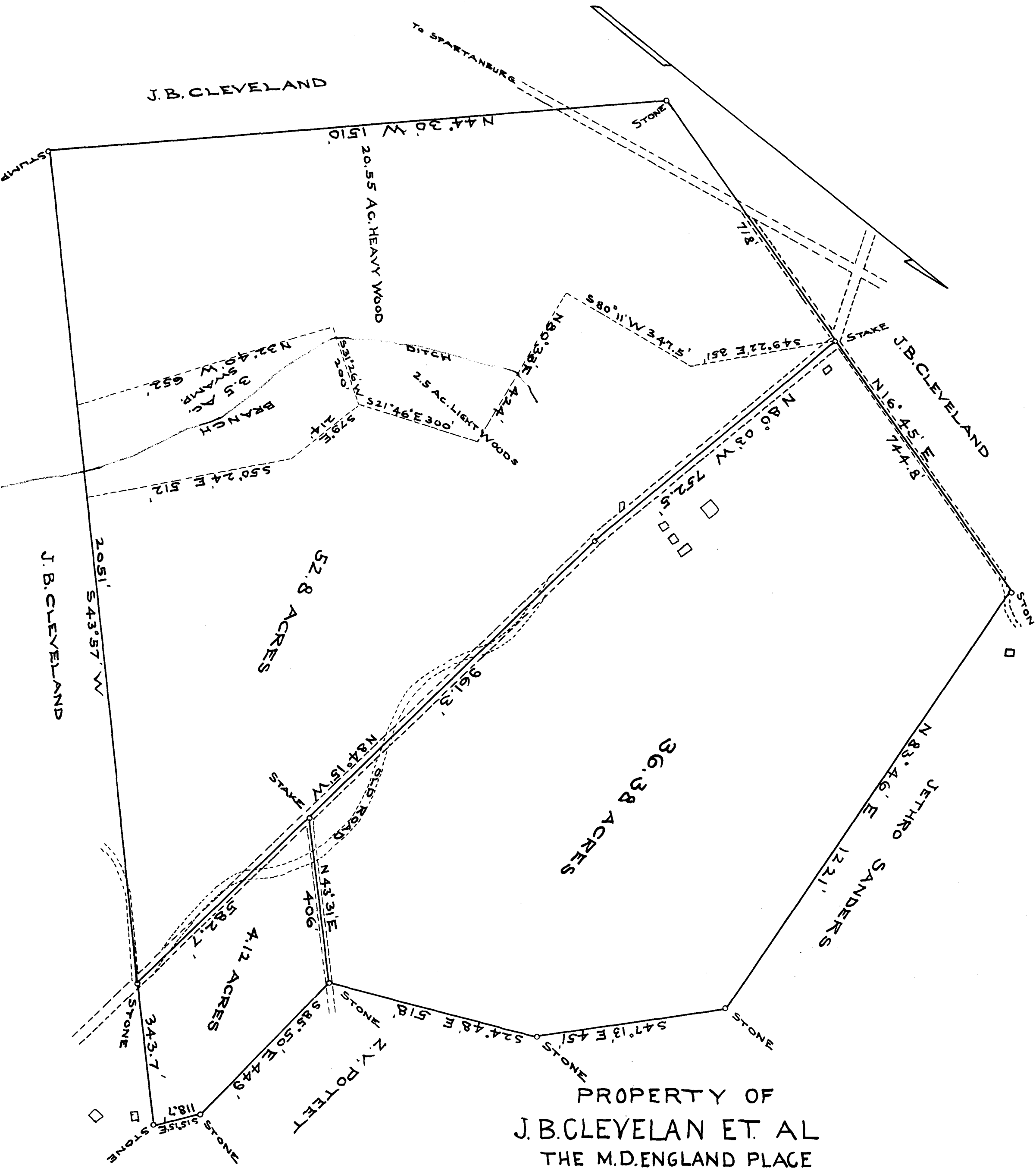


126

EX PARTE
J. B. CLEVELAND ET AL.



PROPERTY OF
J. B. CLEVELAN ET. AL
 THE M.D. ENGLAND PLACE
 on Headwaters of Peters Creek
 SPARTANBURG CO. S.C.

Scale 1"=200'
 Dec. 2, 1910

W.W. Willis, C.E. Spart. S.C.

Registered, Certified & Examined Sept. 3-1912