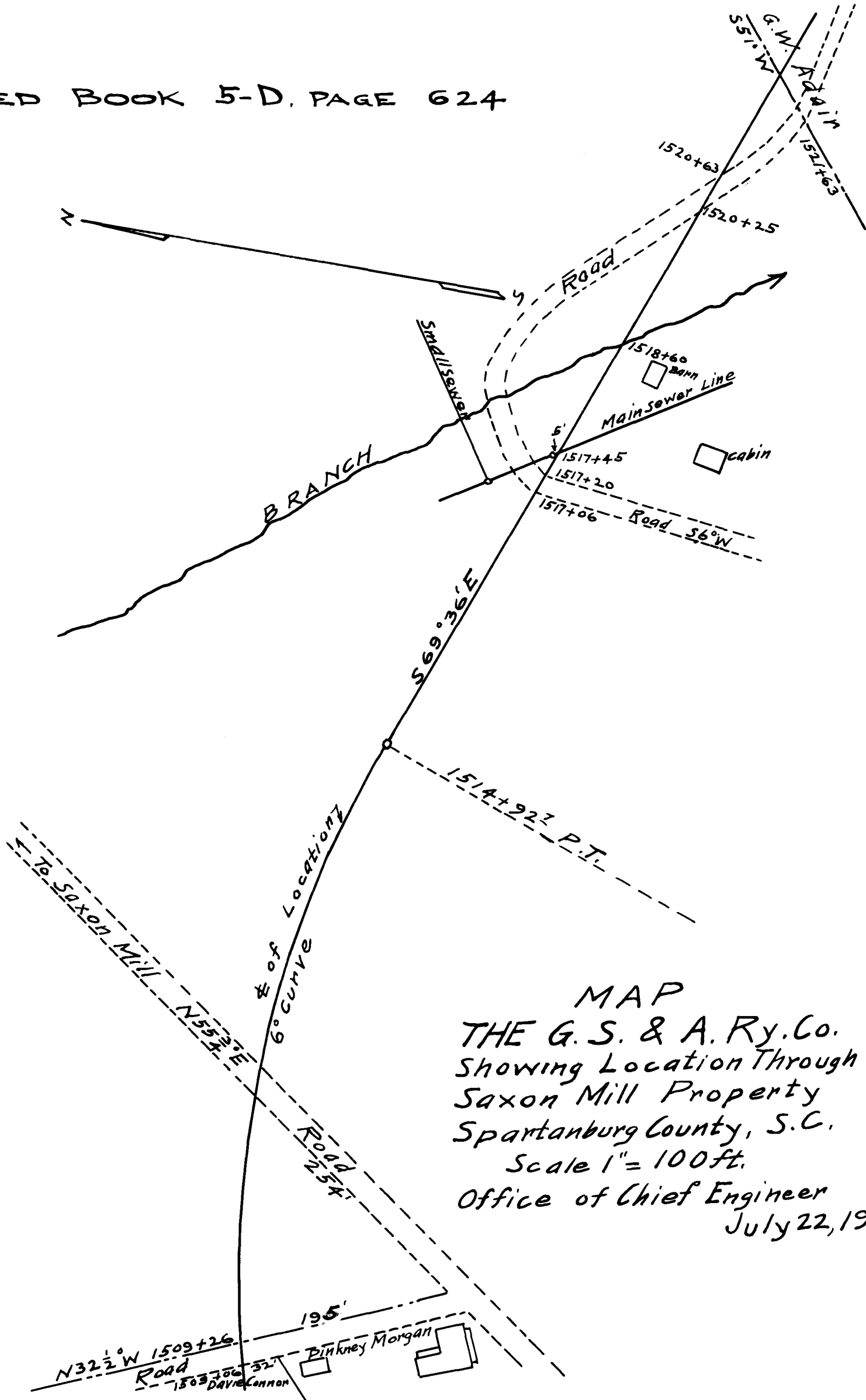


EX PARTE
G., S. & A. RY. CO.

NOTE

SEE DEED BOOK 5-D. PAGE 624



MAP
 THE G. S. & A. Ry. Co.
 Showing Location Through
 Saxon Mill Property
 Spartanburg County, S.C.
 Scale 1" = 100ft.
 Office of Chief Engineer
 July 22, 1912

Registered, Certified & Examined August 12 - 1912