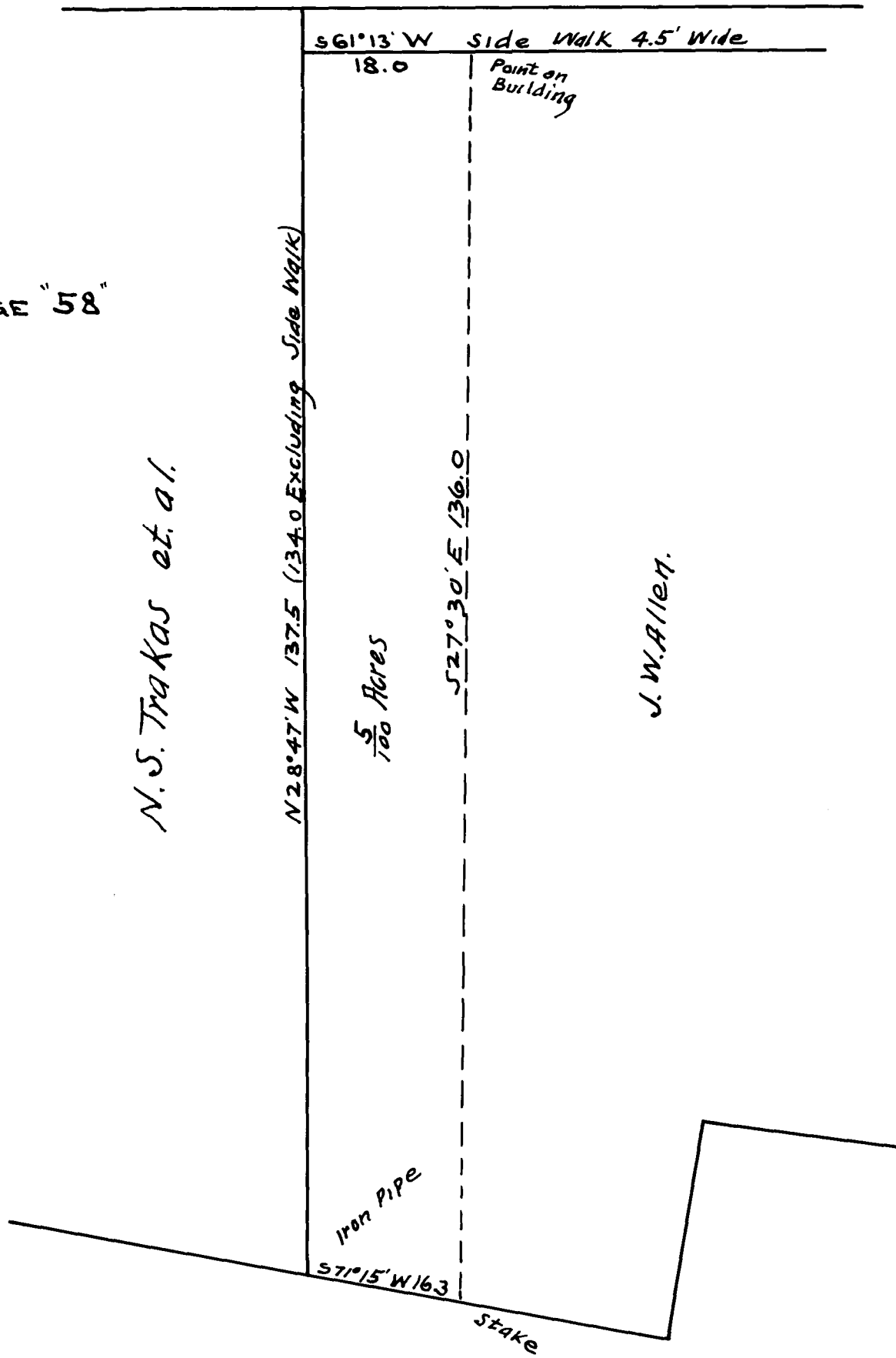


136

EX PARTE
G., S. & A. RY. CO
EXHIBIT "A"

EZELL St.



NOTE:
SEE DEED BOOK 5-F PAGE "58"

Plat Showing
Strip cut off of lot of
J.W. Allen
ON EZELL Street
scale 1" = 16'
Spartanburg S.C.
Sept. 27th 1912.

Registered, certified & Examined October 2-1912