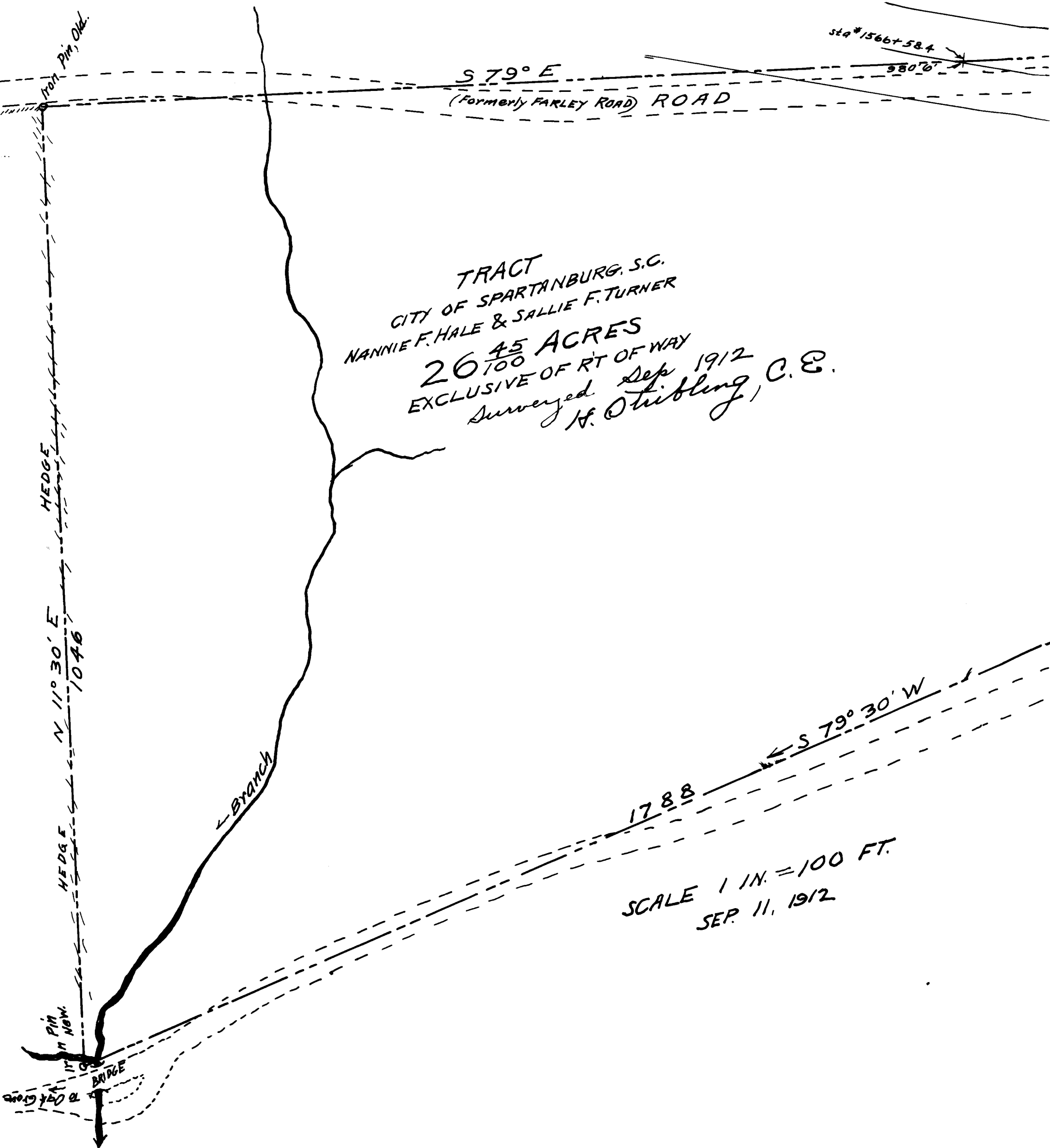


179

EX PARTE

O. L. JOHNSON,
J. P. FIELDER, AND
W. S. GLENN



TRACT
CITY OF SPARTANBURG, S.C.
NANNIE F. HALE & SALLIE F. TURNER

26 ⁴⁵/₁₀₀ ACRES
EXCLUSIVE OF RT OF WAY
Surveyed Sep 1912
H. O. Thibling, C.E.

SCALE 1 IN. = 100 FT.
SEP. 11, 1912