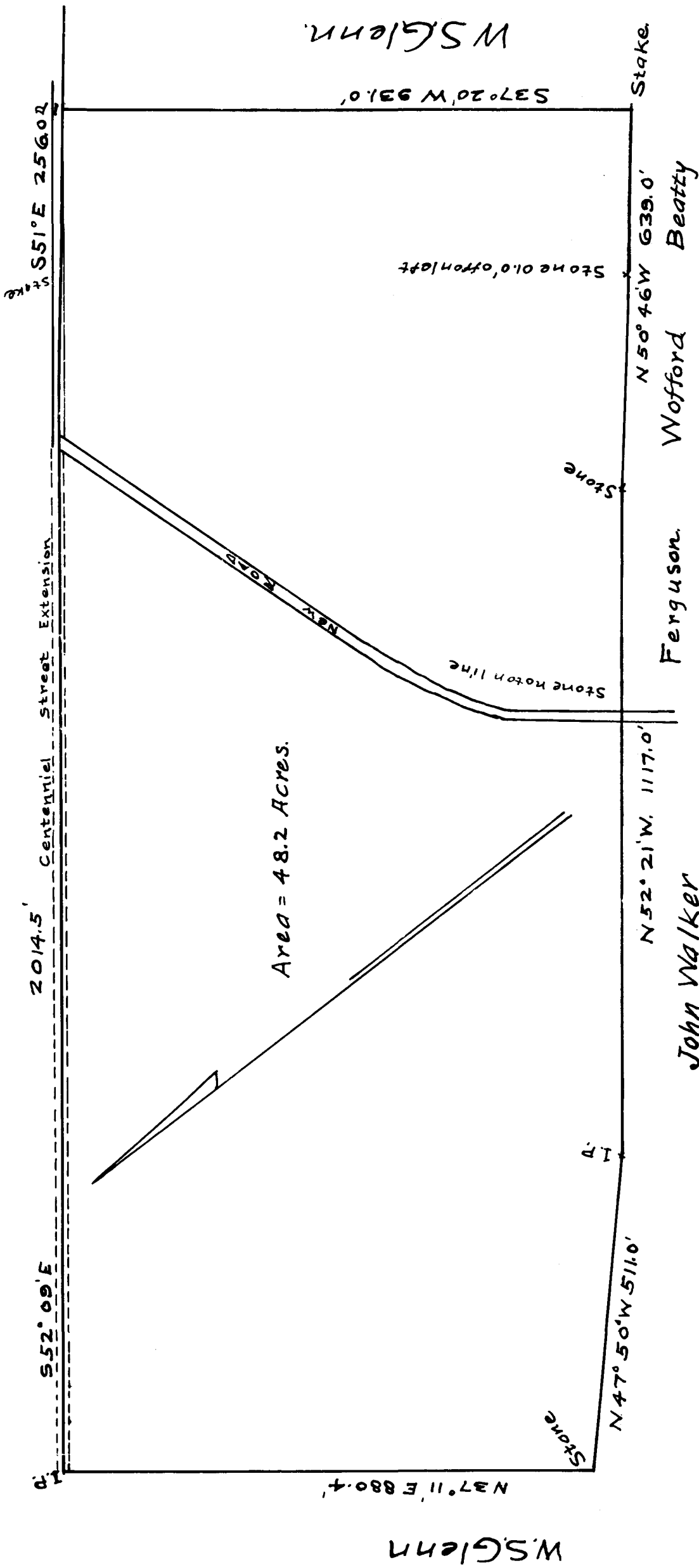


EX PARTE  
L. P. WALKER

L.P. Walker.



PROPERTY OF HENRY LEWIS  
2 MILES NORTH-WEST OF SPARTAN-  
BURG, S. C., SPARTANBURG COUNTY  
SCALE 1" = 200' APRIL 21-1911  
W. N. WILLIS, C.E.

NOTE:  
SEE DEED BOOK "5-C" PAGE 788.

Registered, Certified & Examined October 14-1912