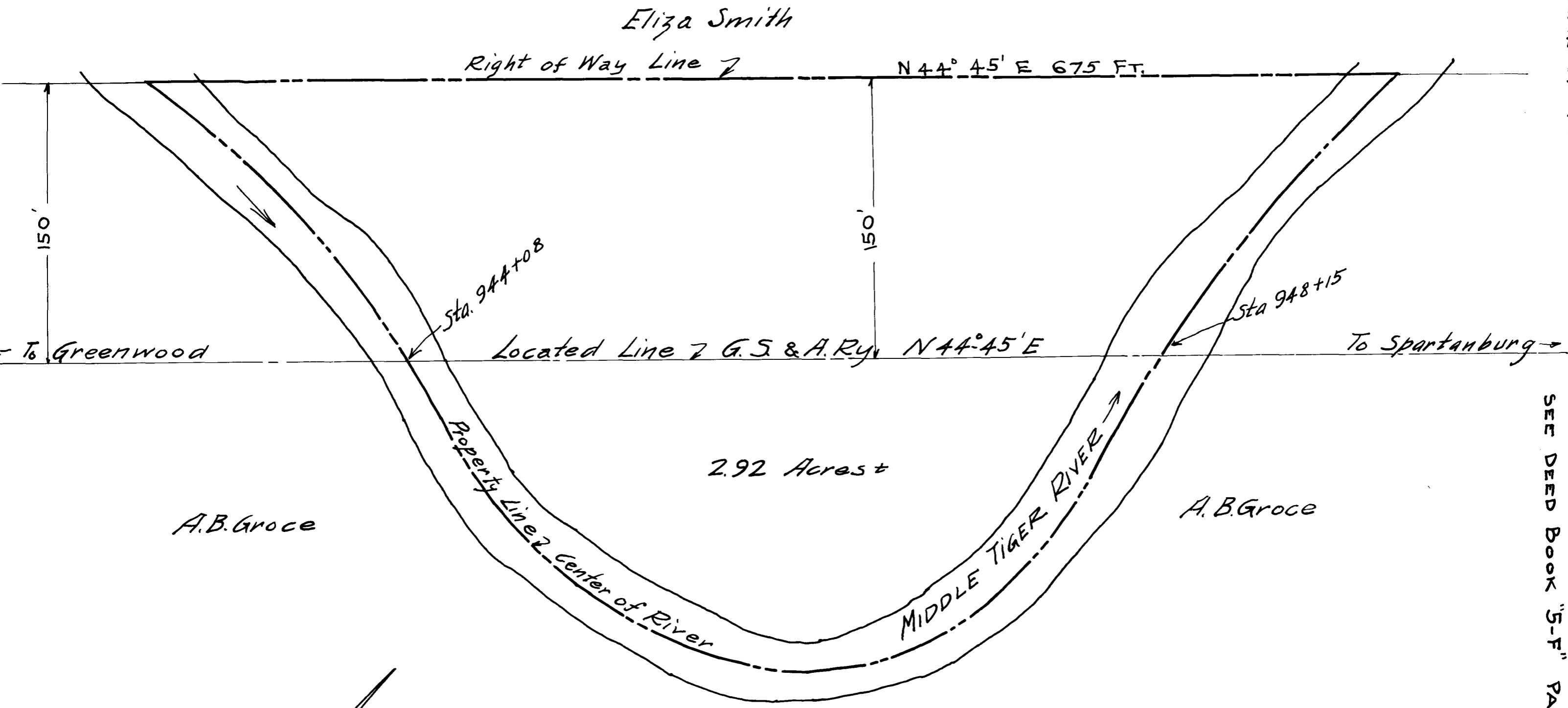


EXHIBIT "A"

G. S. & A. Ry. CO. EX PARTE

NOTE: SEE DEED BOOK "S-F" PAGE "59"



Registered, Certified & Examined Oct. 16-1912

PIEDMONT AND NORTHERN LINES.  
 Right of Way Required from  
 Eliza Smith - Spartanburg Co., S.C.  
 for the Greenville, Spartanburg and  
 Anderson Ry.  
 Scale 1 in = 50 ft.  
 Office of Ch. Engr., Charlotte, N.C., Sept. 17, 1912