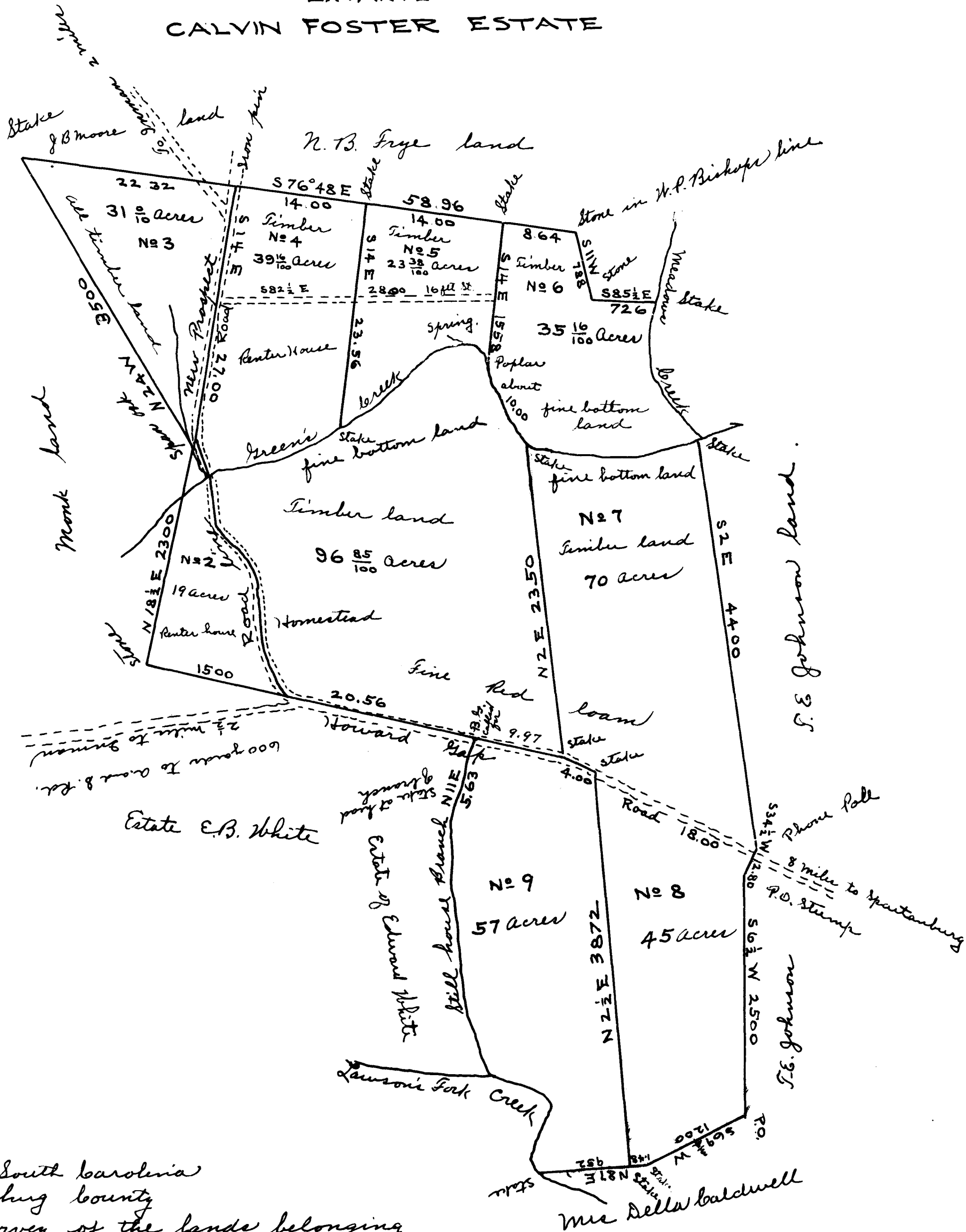


EX PARTE  
CALVIN FOSTER ESTATE



State of South Carolina  
 Spartanburg County  
 Survey of the lands belonging  
 to the Estate of Calvin Foster decd late  
 of Spartanburg County, S.C.  
 Surveyed 7-8-10-11 of Oct. 1912  
 Geo. H. Camp  
 D.S.

10 chains to the inch.

Registered, Certified + Examined November 20-1912