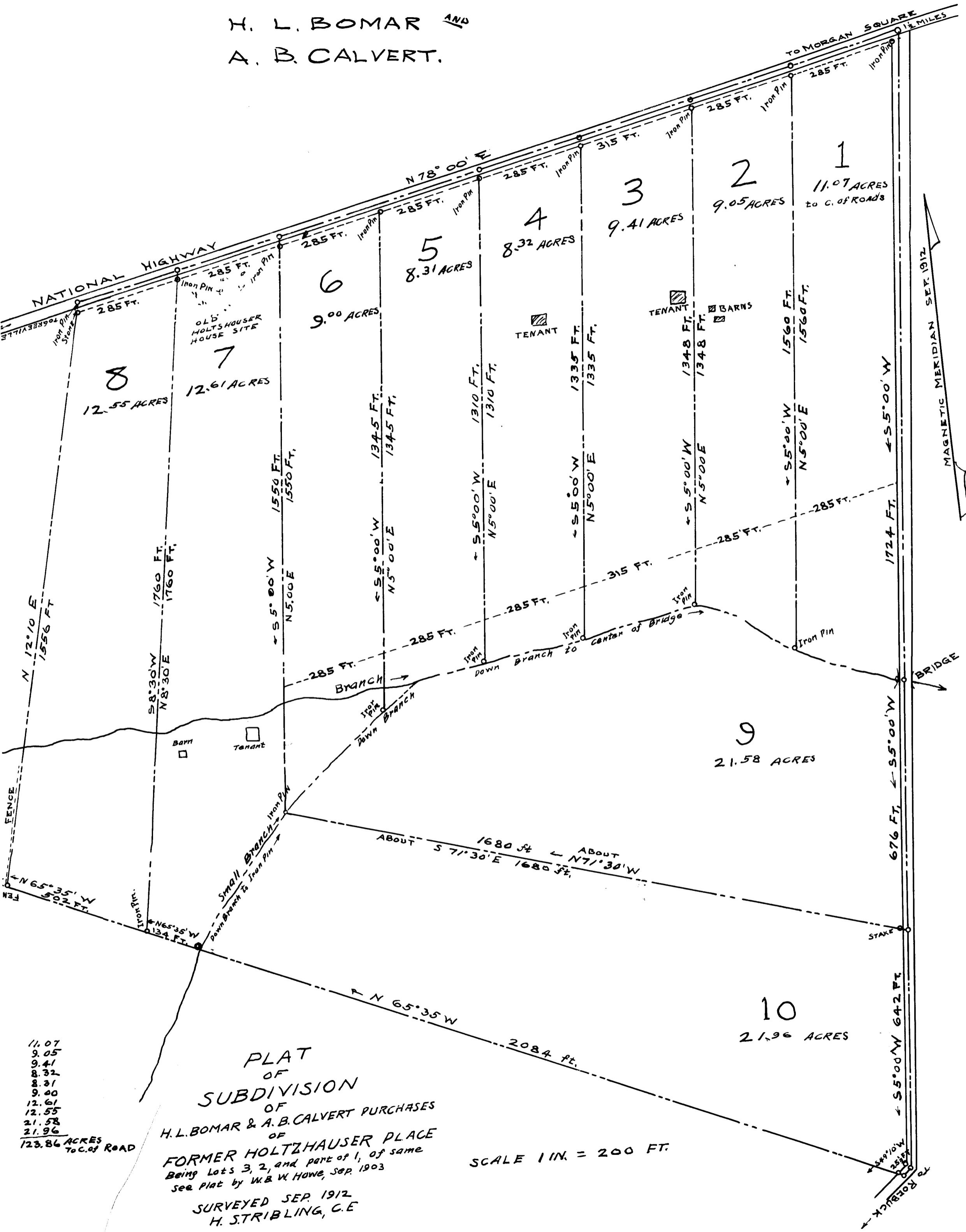


150

EX PARTE
H. L. BOMAR AND
A. B. CALVERT.



- 11.07
 - 9.05
 - 9.41
 - 8.32
 - 8.31
 - 9.00
 - 12.61
 - 12.55
 - 21.58
 - 21.96
- 123.86 ACRES
TO C. OF ROAD

PLAT
OF
SUBDIVISION
OF
H. L. BOMAR & A. B. CALVERT PURCHASES
OF
FORMER HOLTZHAUSER PLACE
Being Lots 3, 2, and part of 1, of same
see Plat by W. B. W. HOWE, Sep. 1903
SURVEYED SEP. 1912
H. STRIBLING, C. E.

SCALE 1 IN. = 200 FT.

Registered, Certified & Examined Nov 13-1912