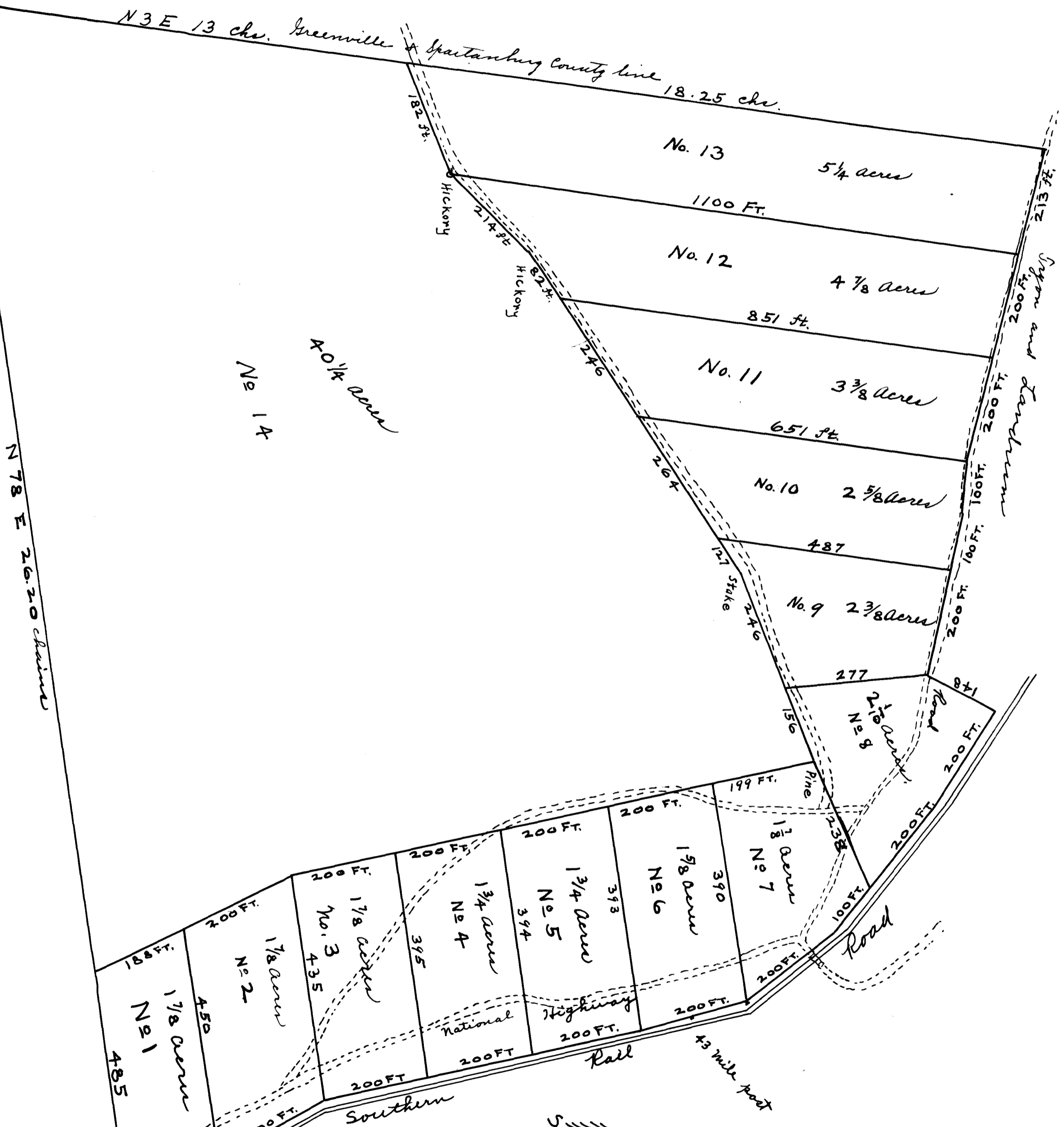


EX PARTE  
W. G. WESTON

J. C. WALL - PLFF.  
-VS-  
W. G. WESTON, DEFT

Scale 2 1/2 chains or 165 ft. to one inch.



South Carolina, Spartanburg county.  
 By request of W. G. Weston I have sub-divided for him  
 a tract of land containing 71 19/20 acres, situated in Spartanburg  
 county, State of South Carolina. The above map is a correct  
 representation of the several lots  
 Surveyed Nov 28<sup>th</sup> 1912  
 S. B. Edwards, Surveyor

Registered, Certified + Examined Dec. 7<sup>th</sup> 1912