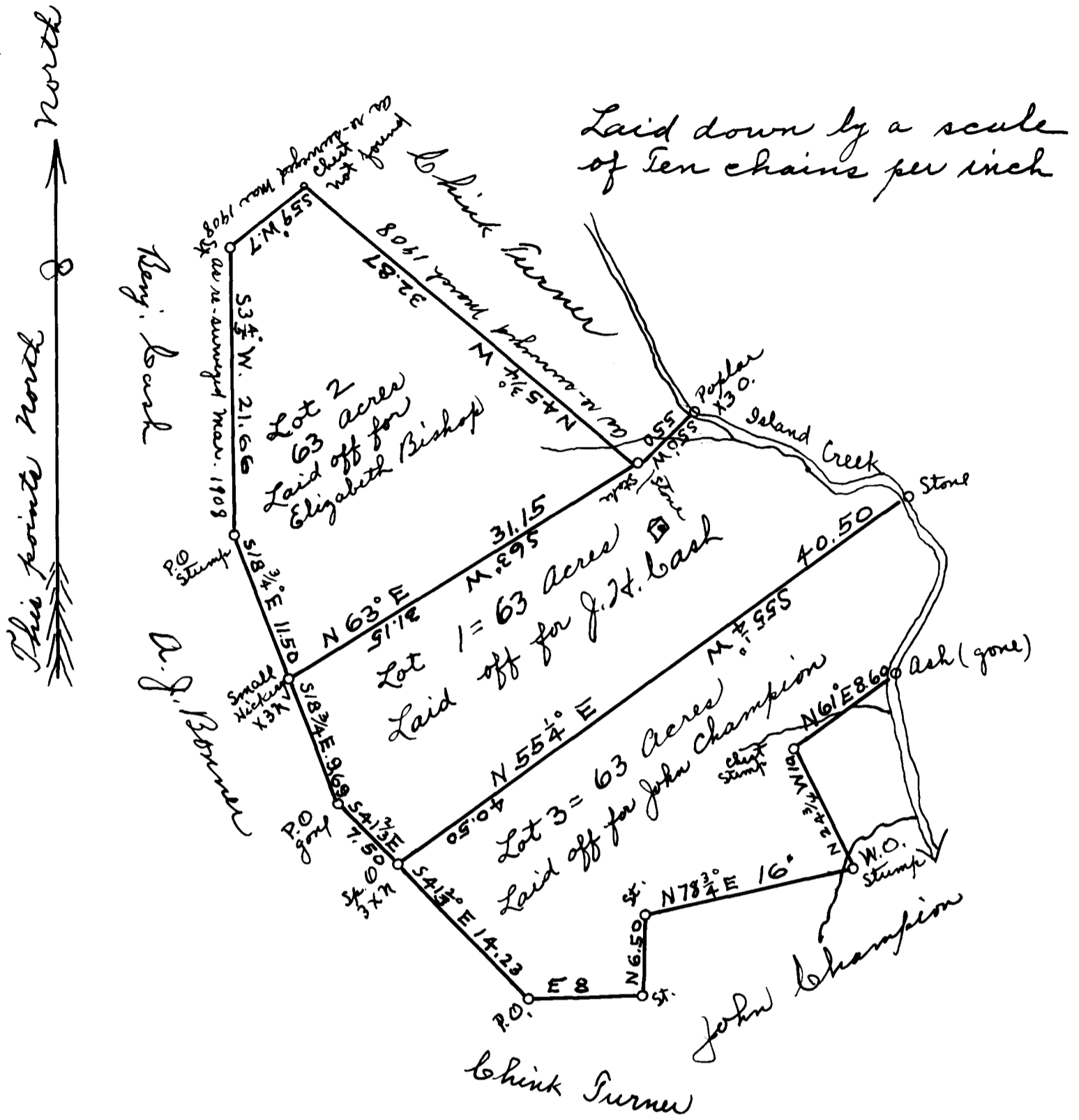


& Parte
John Leash Estate
L.O. Bishop



Spartanburg County }
South Carolina }

The above plat represents 189 acres of land belonging to the Estate of John Leash, dead, which I have divided into three equal lots for the lawful representatives of said estate according to mutual agreement made by them. The different lots have such shape, marks & bounds as are shown above and each contains 63 acres, lying on the S.W. side of Island Creek in Spartanburg County, S.C. Calculated and platted partly from a plat made by John Epton and partly from actual survey.
Nov. 16th 1891
T.E. Johnson, Surveyor.

Registered, Certified & Examined Dec. 13, 1912