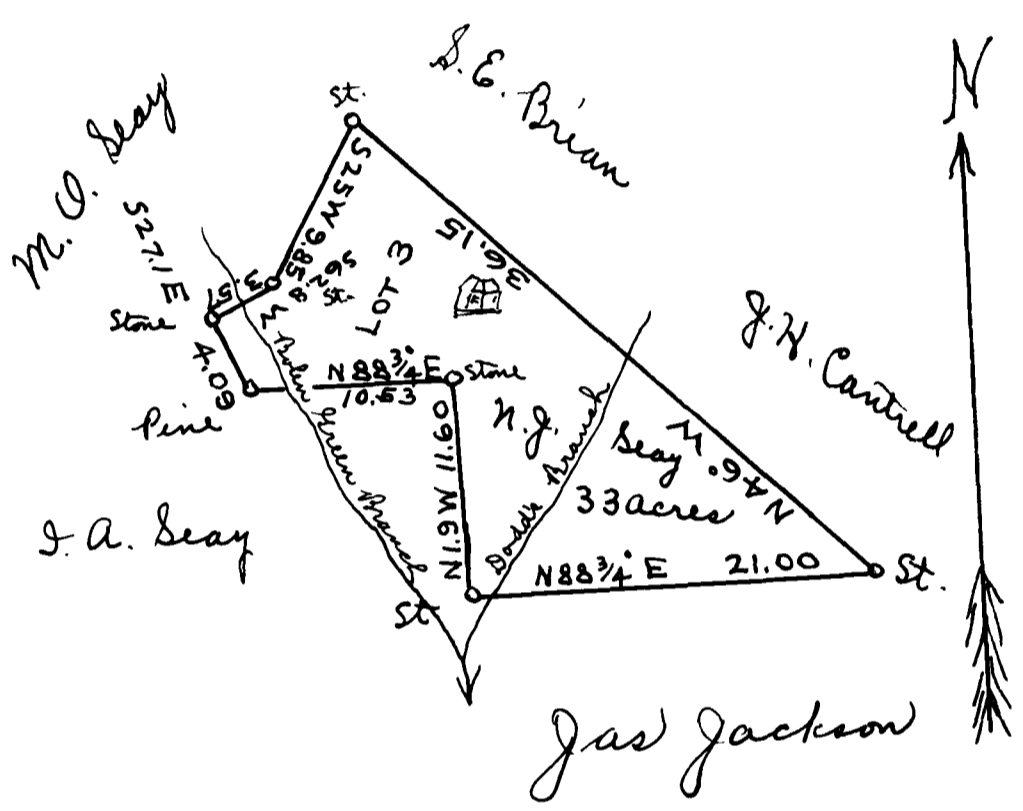


1259

Ex Parte
 N. J. Seay
 Piedmont Live Stock Co.



Scale of 10 chains per inch

The above plat represents thirty-three acres of land laid off for N. J. Seay at the request of J. M. Seay. Nov. 24-1908, named in his will as the tract on Shoal Branch

J. E. Johnson, Surveyor

Registered, Certified & Examined Dec 21-1913