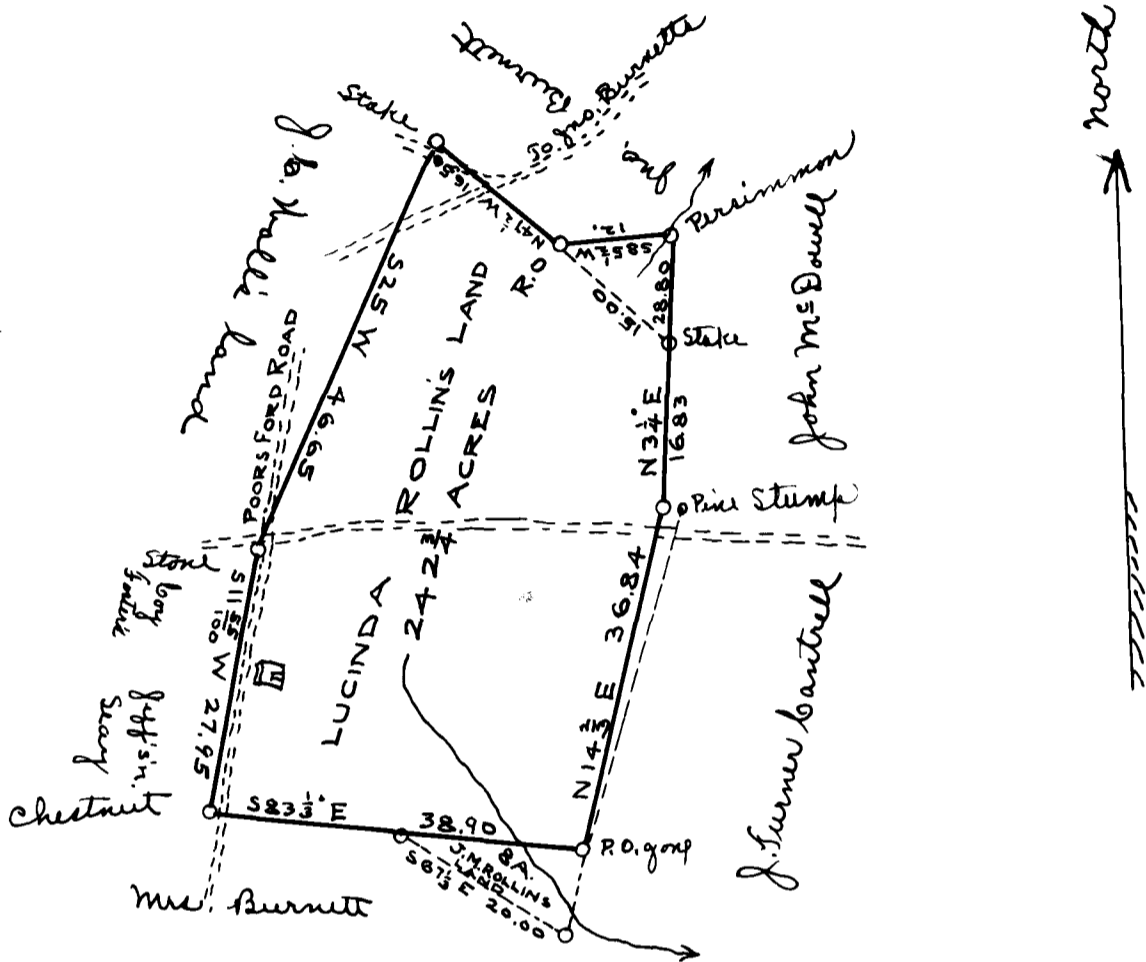


EX PARTE
LUCINDA ROLLINS

20 chains per inch



State of South Carolina }
County of Spartanburg }

The above Plat represents a tract of land deeded to T. O. P. Vernon in Trust for Lucinda Rollins and after her death for her children and also a small lot of land deeded from G. W. Holden to J. M. Rollins, adjoining the first named tract on the S. E. corner, and colored blue. Situated in said State and County. Lying on Poores Ford Road, mostly on the East side of said road, and on waters of Shoaly Creek and Thompson's Creek.

The tract first named contains 242 3/4 acres and J. M. Rollins lot contains about 8 acres and both have such bearings, distances, boundaries, marks &c as the plat represents. Re-surveyed by me March 12th 1883,

J. Earle Johnson
Surv.

Registered, Certified & Examined April 3 - 1913.