

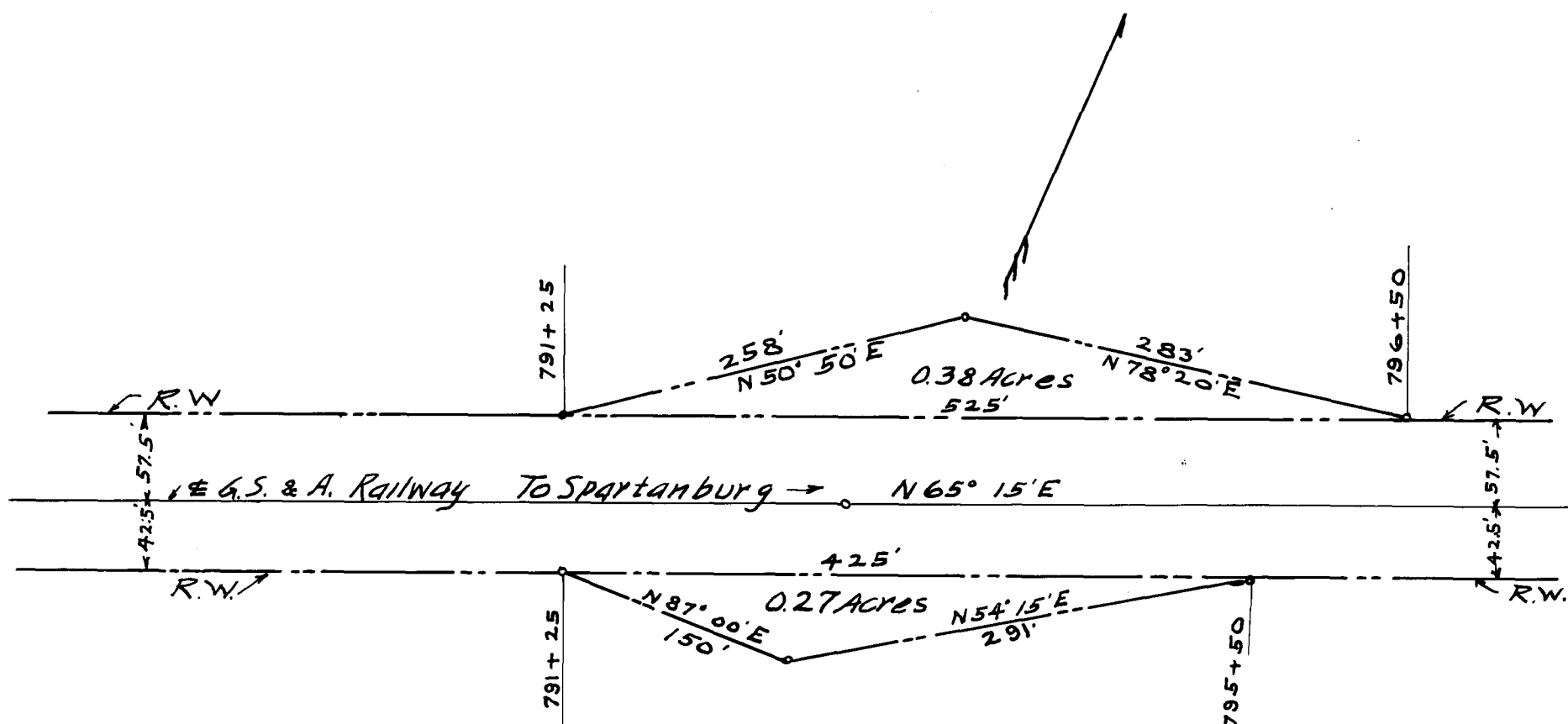
EX PARTE

GREENVILLE, SPARTANBURG, & ANDERSON RY. CO

NOTE:

SEE DEED BOOK 5-H PAGE 74

EXHIBIT 'A'



*Piedmont & Northern Lines.
 Right of Way Required on the Littlefield
 Place, from Sta. 791+25 to 796+50, by the
 Greenville, Spartanburg & Anderson Ry.
 Scale 1"=100'
 Charlotte, N.C. 11-1-12.*

Registered, Certified & Examined Dec. 17-1912