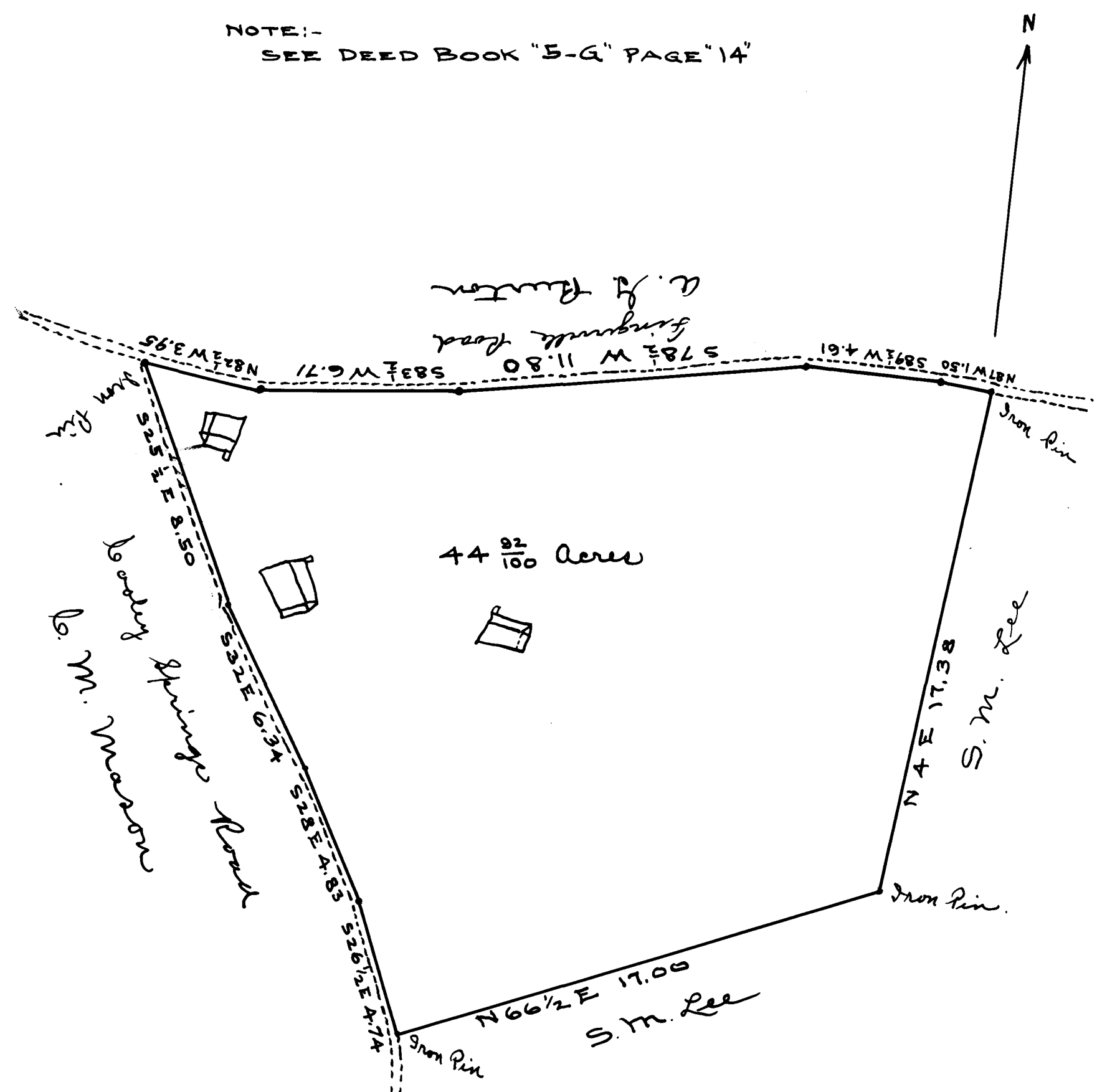


EX PARTE
D. C. BURNETT

NOTE:-
SEE DEED BOOK "5-G" PAGE "14"



Scale 4 chains to the inch.

This plat represents 44 ⁹²/₁₀₀ Acres D.C. Burnett bought of S. M. Lee and also part of the brow Green place.

Surveyed Feb. 1911.

J. A. McMillin
Surveyor.

Registered, Certified & Examined April 8th 1913.