

EX PARTE

H. P. McMAKIN
W. G. QUERY &
A. B. GROCE

W.E. McMakin land

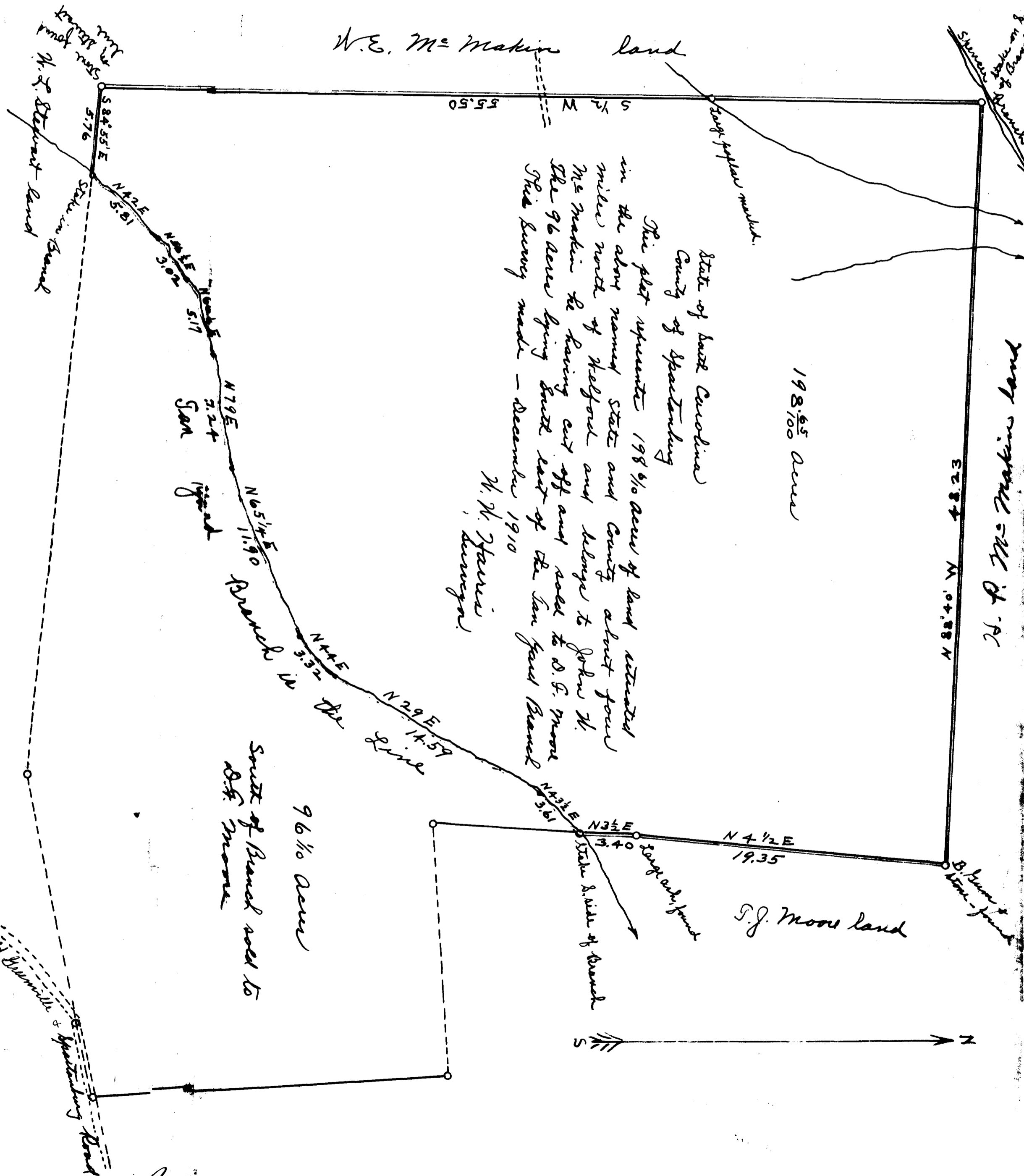
H. P. McMakin land

198 ⁶⁵/₁₀₀ Acres

State of South Carolina
County of Spartanburg

This plat represents 198 ⁶⁵/₁₀₀ Acres of land situated
in the above named State and County about four
miles north of Melford and belongs to John W.
McMakin he having cut off and sold to D. F. Moore
the 96 ⁶⁵/₁₀₀ Acres lying East East of the Iron Road Branch
This survey made - December 1910
W. W. Turner
Surveyor

96 ⁶⁵/₁₀₀ Acres
South of Branch sold to
D. F. Moore



Registered, Certified & Examined May 17-1912