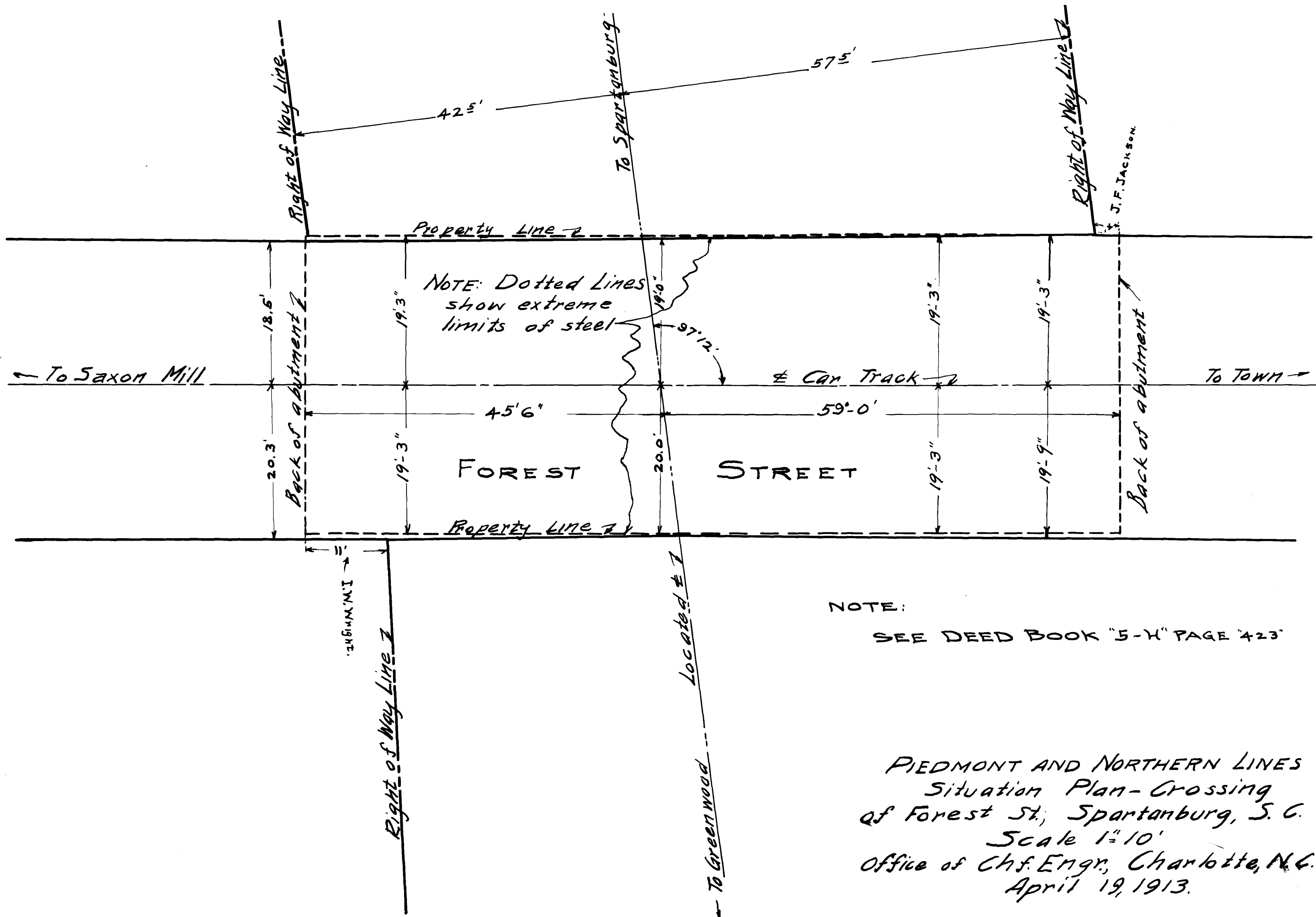


GREENVILLE, SPARTANBURG & ANDERSON RY. CO.
EX PARTE



NOTE: Dotted Lines show extreme limits of steel

NOTE:
SEE DEED BOOK "5-H" PAGE "423"

PIEDMONT AND NORTHERN LINES
Situation Plan - Crossing
of Forest St., Spartanburg, S. C.
Scale 1" = 10'
Office of Chf. Engr., Charlotte, N.C.
April 19, 1913.

Registered, Certified + Examined May 22-1913