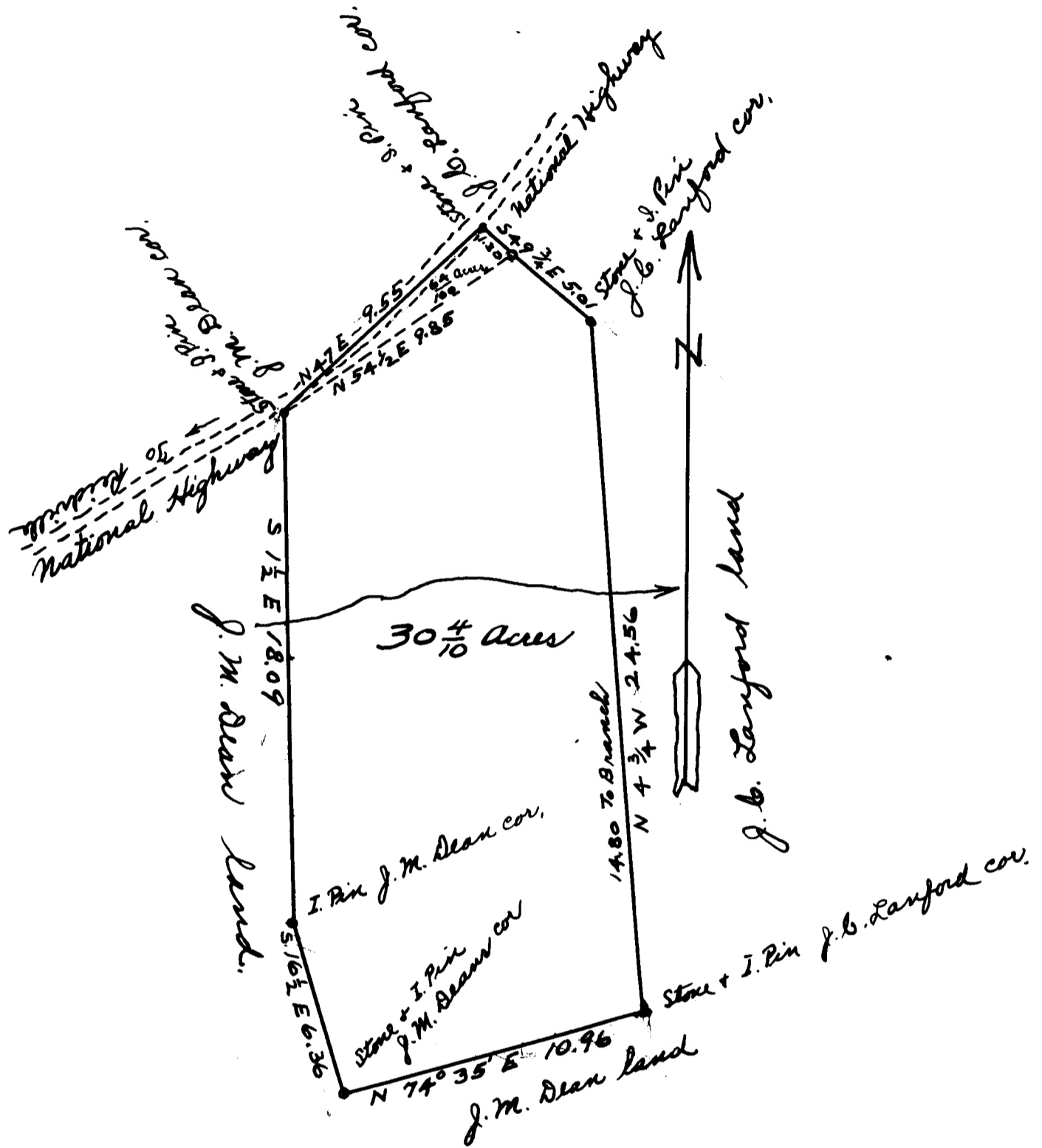


EX PARTE
W. J. WHITE



The above plat represents 30 ⁴/₁₀ acres of land lying on the National Highway about 1 1/2 miles from Spartanburg City, towards Reidville.

Surveyed for W. J. White, this July 10-1913
 W. H. Harris } Surveyors
 D. M. Harris }

Scale 5 chains to the inch

Registered, Certified & Examined July 21-1913