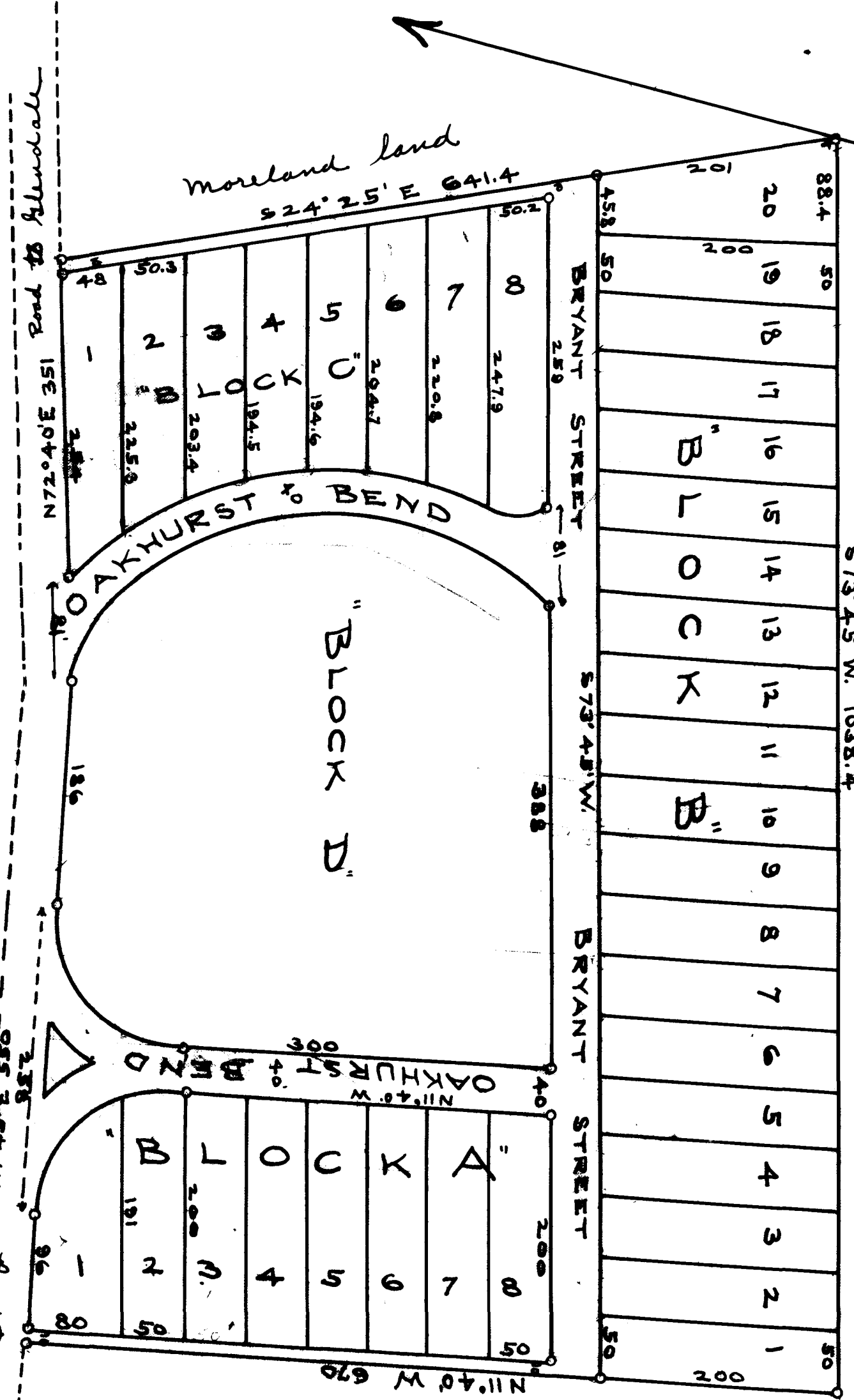


EX PARTE
OAKHURST DEVELOPMENT CO



The above plat represents lands belonging to the Oakhurst Development Company and is situated about one mile south of Spartanburg City on the Glendale Road, and within a few feet of the Electric Power line. Surveyed and divided as shown May 20th 1913 by

W. H. Harris }
R. F. Spton } Surveyors.

Registered, Certified & Examined August 18 - 1913