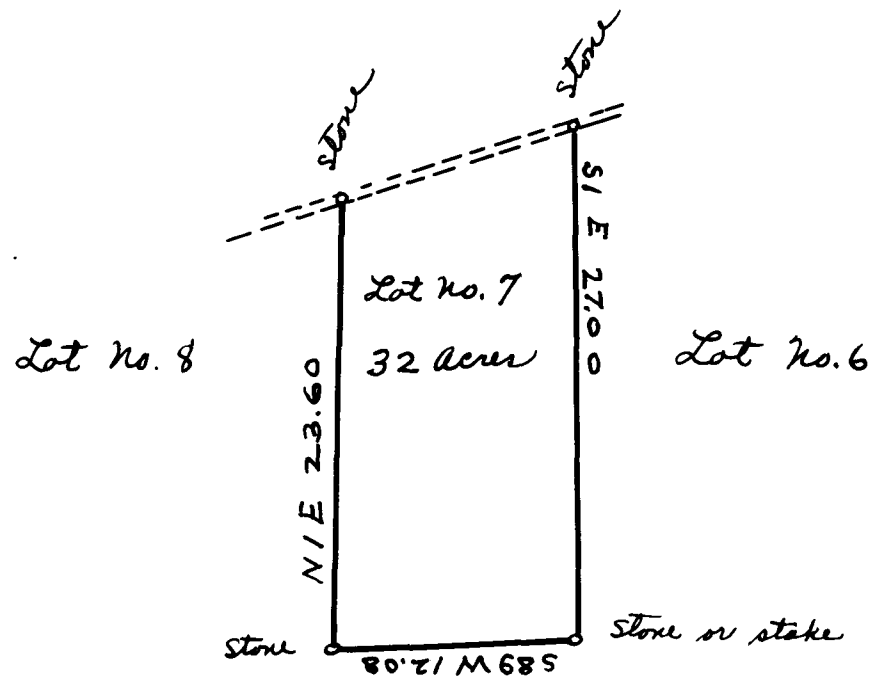


EX PARTE
H. J. STAGGS

Laid down by a scale of 10 chs. pr. inch.



Vina Staggs et al
vs
J. H. Atkins ^{adm.} et al

The above plat is a correct representation of Lot No. 7 in the above case and has been assigned to H. J. Staggs

Dec 9th 1897

J. D. Norman
Surveyor

Registered, Certified & Examined October 2nd 1913.