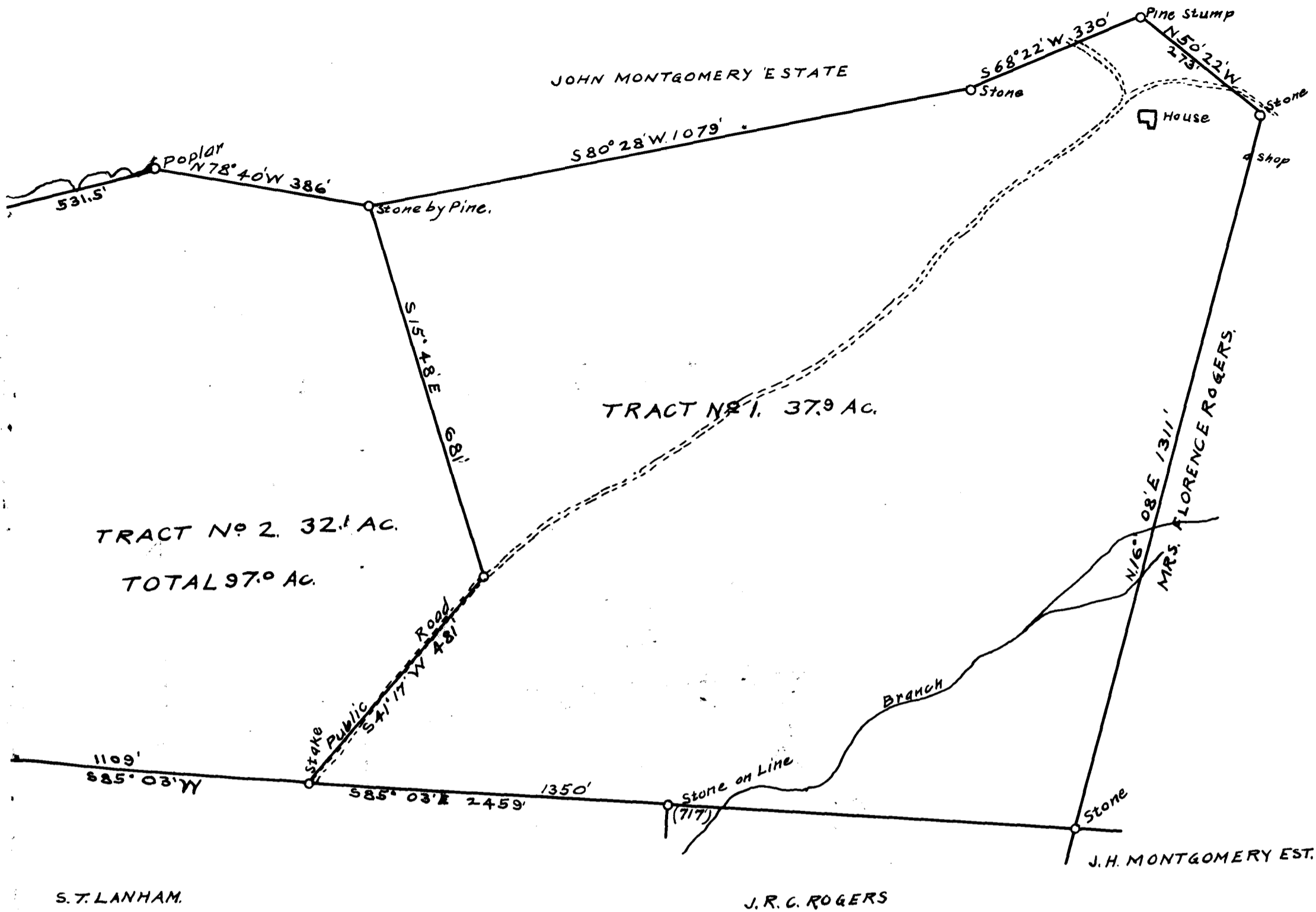


110



W. E. ROGERS ESTATE
 NEAR
 WALNUT GROVE

SPARTANBURG COUNTY, S. C.

SCALE 1" = 200'

AUGUST 1 - 1913
 REV. OCT. 17 - 1913

W. N. WILLIS, CIV. ENGR., SPAR., S. C.

Registered, Certified & Examined Oct. 17 - 1913