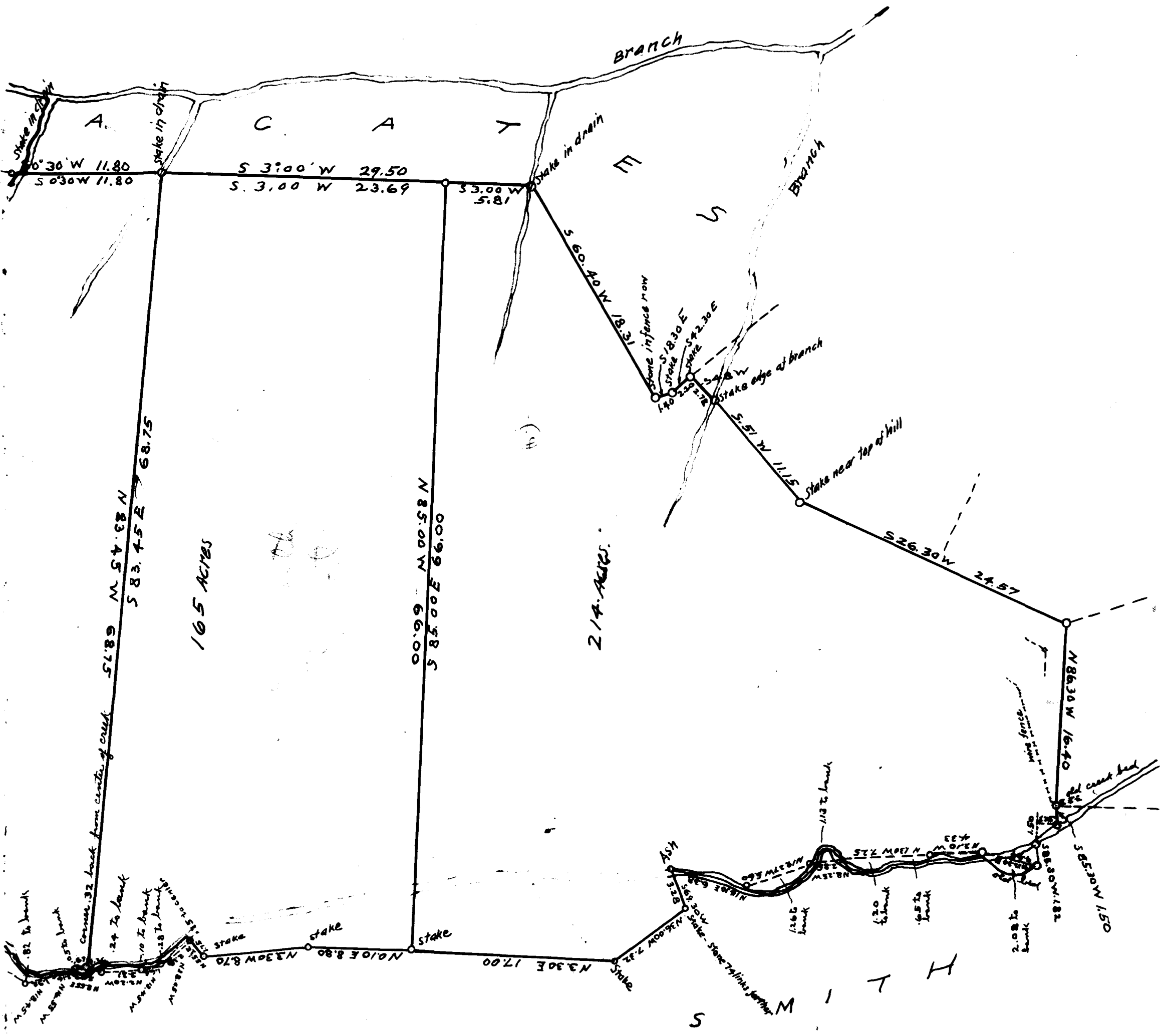


Plat of Estate of Elmer L. Smith, dead, near Glenn Springs, S. C., on the waters of Wiley's Creek. Resurveyed and subdivided as per annexed plat. Survey is based upon a plat made by J. F. Sloan in 1876. Also upon deeds to a place occupying the upper section of this plat. (J. Winemith to E. Elmer Smith)

Mar. 5<sup>th</sup> 1909

Scale 1 inch = 8 chains

H. Strubling, Surveyor.



Registered, Certified + Examined Oct. 18-1913