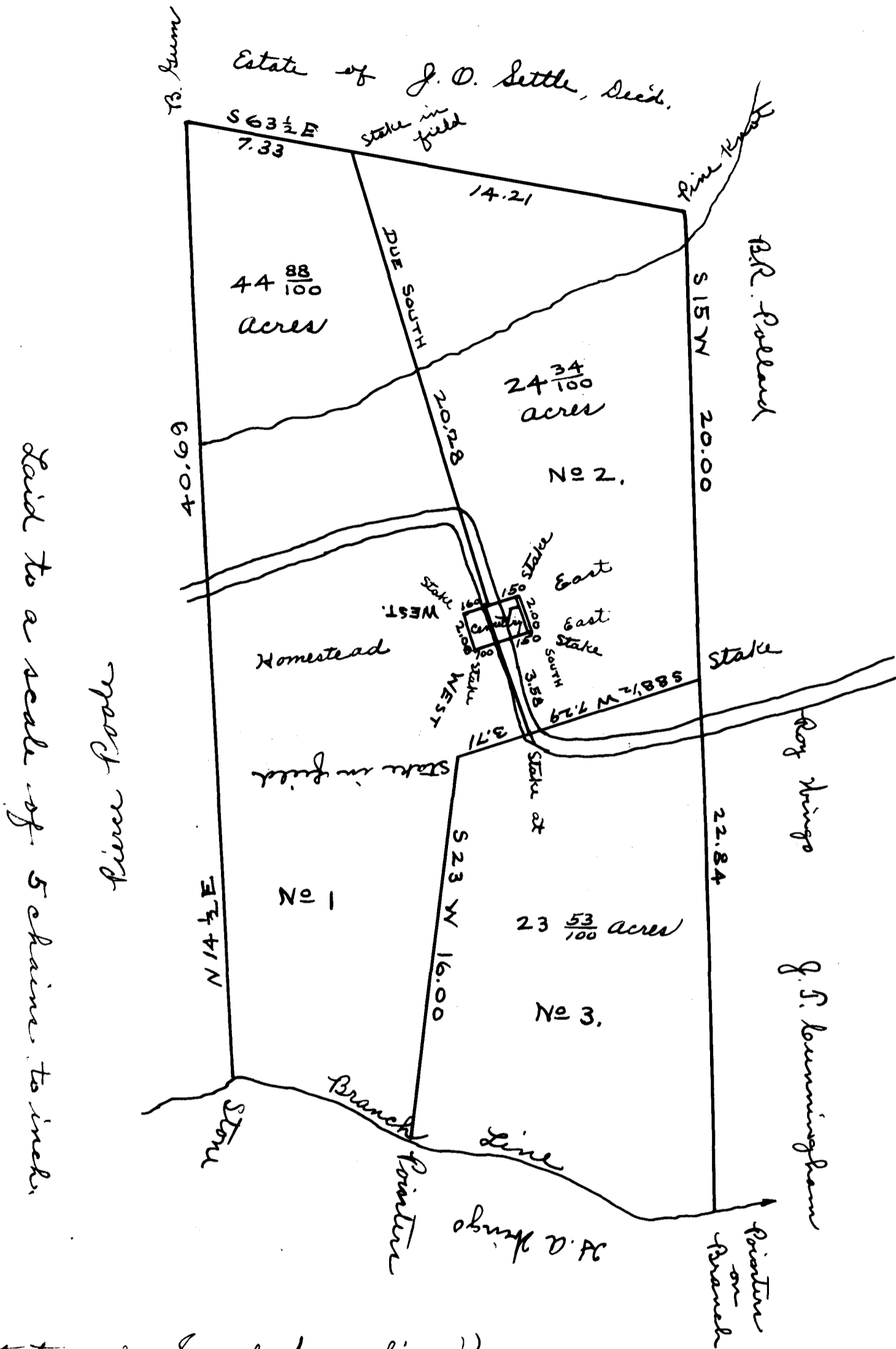


EX PARTE

MARY E. SETTLE (EST.) OR W. M. SETTLE



State of South Carolina }
 Spartanburg County }
 By request of J. O. Kings, Esq. Executor of estate
 of Mary E. Settle, dec'd. late of this county, I have
 partitioned the above lot of land, it having meter and bounds
 as shown above.
 Surveyed Oct. 13-14-13. Geo. H. Camp
 Surveyor
 Registered, certified & Examined Dec. 6-1913