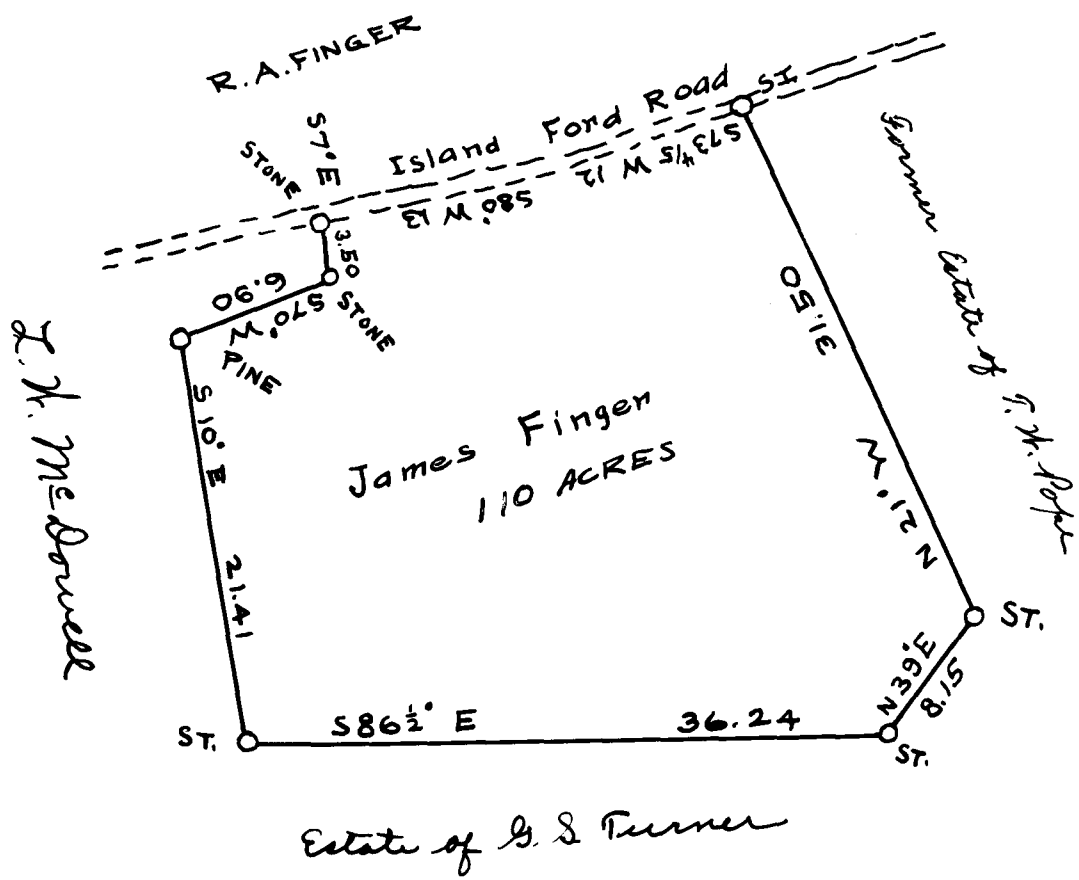


Scale of 10 chains per inch

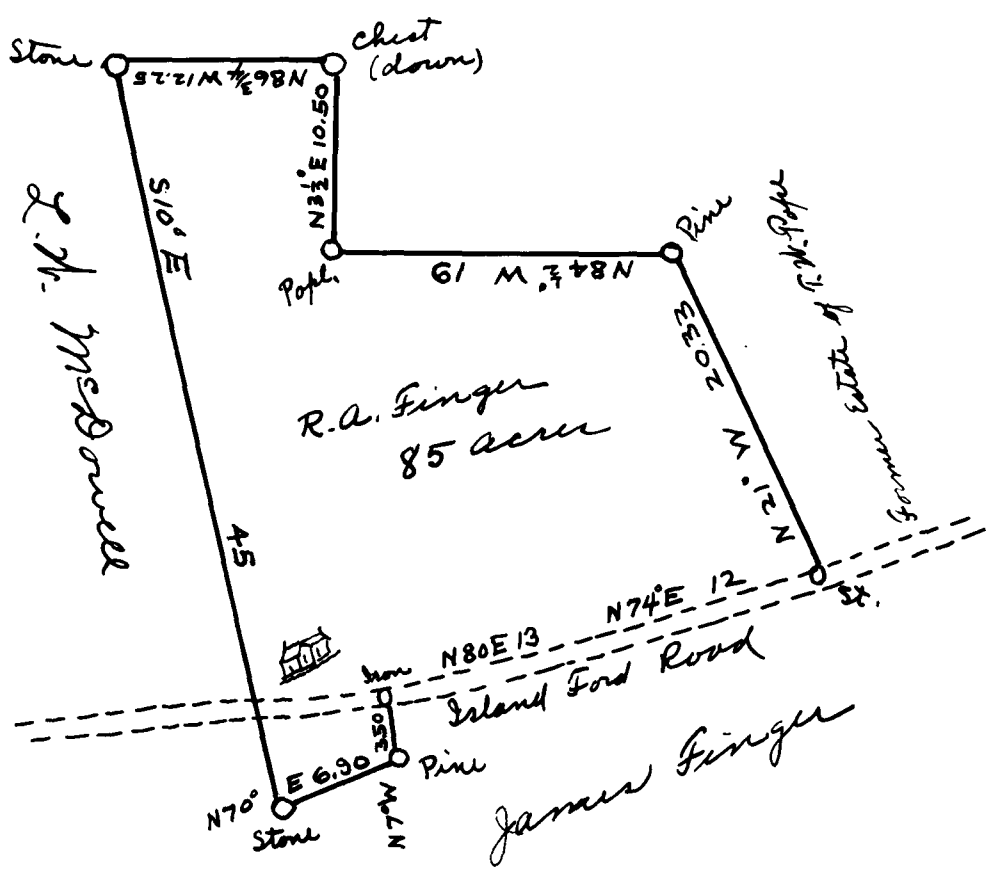


EX PARTE  
R. A. FINGER  
J. J. FINGER

Spartanburg County }  
South Carolina }

The above Plat shows a tract of land on the south side of Island Ford Road given to James Finger by the Will of Marcus Finger, dec'd. This Nov. 4<sup>th</sup> 1913  
T.E. Johnson  
Surveyor

Former Estate of F. W. Pope



Scale of Ten chains per inch

The above plat shows the partition of the home tract willed to R.A. Finger by M.P. Finger, deceased, containing 85 acres having such form marks and boundaries as are above shown. It contains 85 acres, and has such metes and bounds as are above shown. This Nov. 4 - 1913  
T.E. Johnson  
Surveyor.

Spartanburg County }  
South Carolina }

We have agreed that the within Plat properly shows the land given to us by the last Will and testament of our father M. P. Finger now deceased, so far as the boundary extends. Nov. 1-1913

Witness  
T.E. Johnson  
Surveyor  
R. A. Finger  
J. J. Finger

Registered, certified & Examined Dec. 12 - 1913