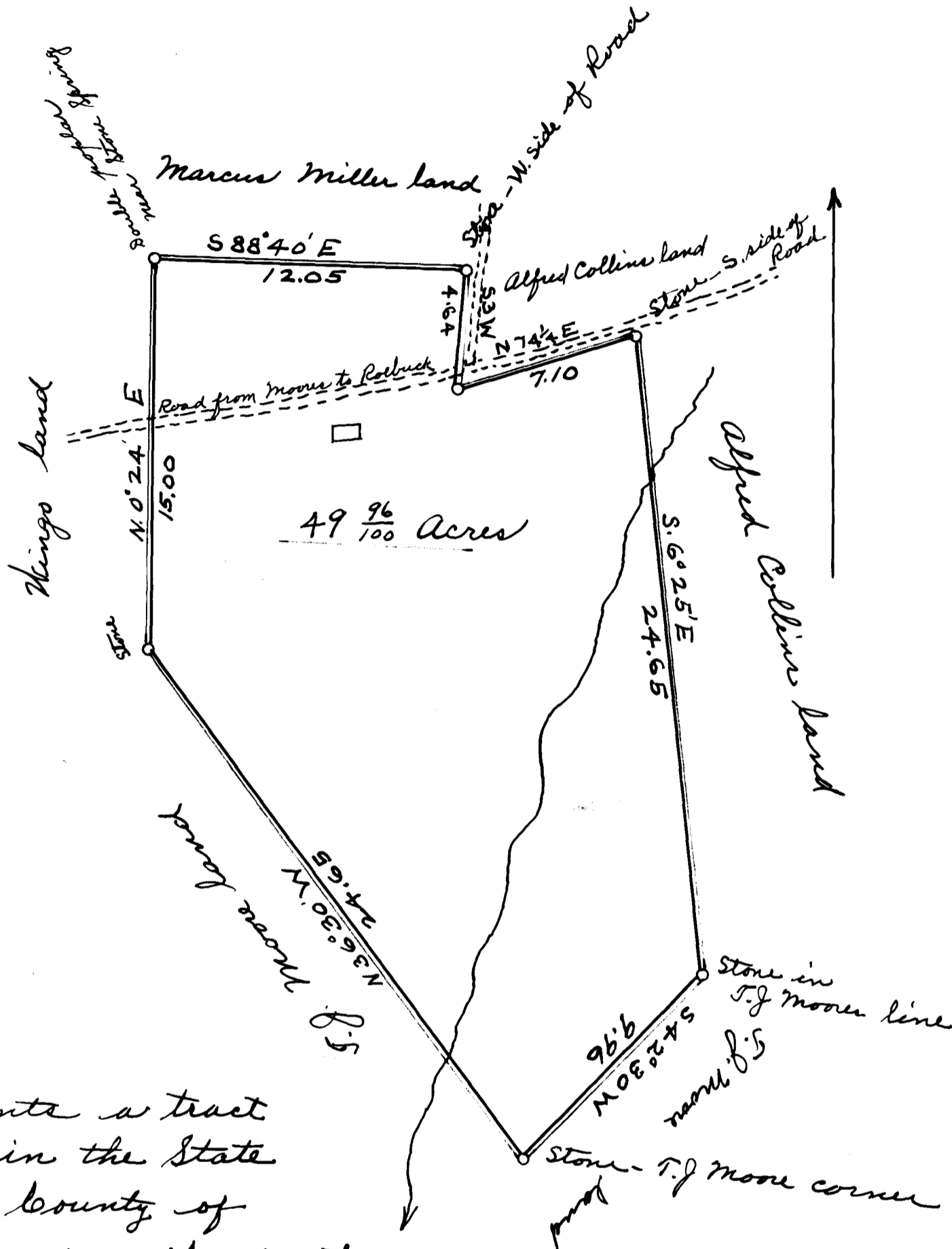


EX PARTE  
T. B. BULMAN



This plat represents a tract of land situated in the State of South Carolina, County of Spartanburg about one mile south of the town of Roebuck and has such boundaries and area as here shown.

Surveyed for T.B. Bulman this 10<sup>th</sup> day of December 1913.

W. W. Harrie  
Surveyor

Registered, Certified + Examined Dec 20-1913