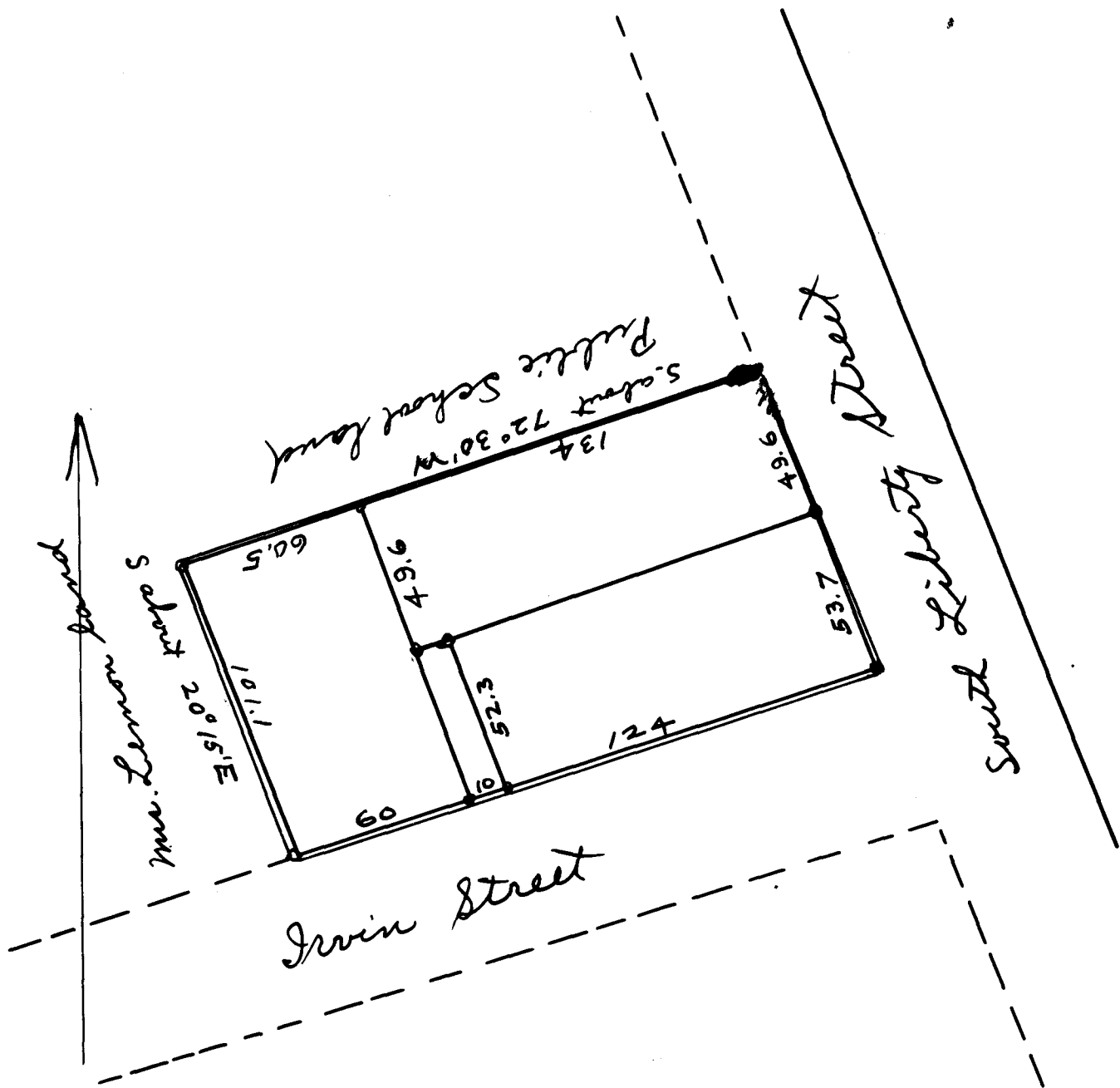


74 Ex Parte

B. F. Bomar; Jessie G. Wilkins; L. J. Bomar and Myriam W. Shore

These lots of land on the corner of South Liberty and Irwin Streets in the city of Spartanburg S. C. were surveyed by me for B. F. Bomar December 11<sup>th</sup> 1913 - Because of the electric wires on the premises affecting the needle of my instrument I cannot vouch for the correctness of the courses given but the dimensions are right

W. H. Harris,  
Surveyor.



Registered, certified + examined Jan. 26<sup>th</sup> 1914.