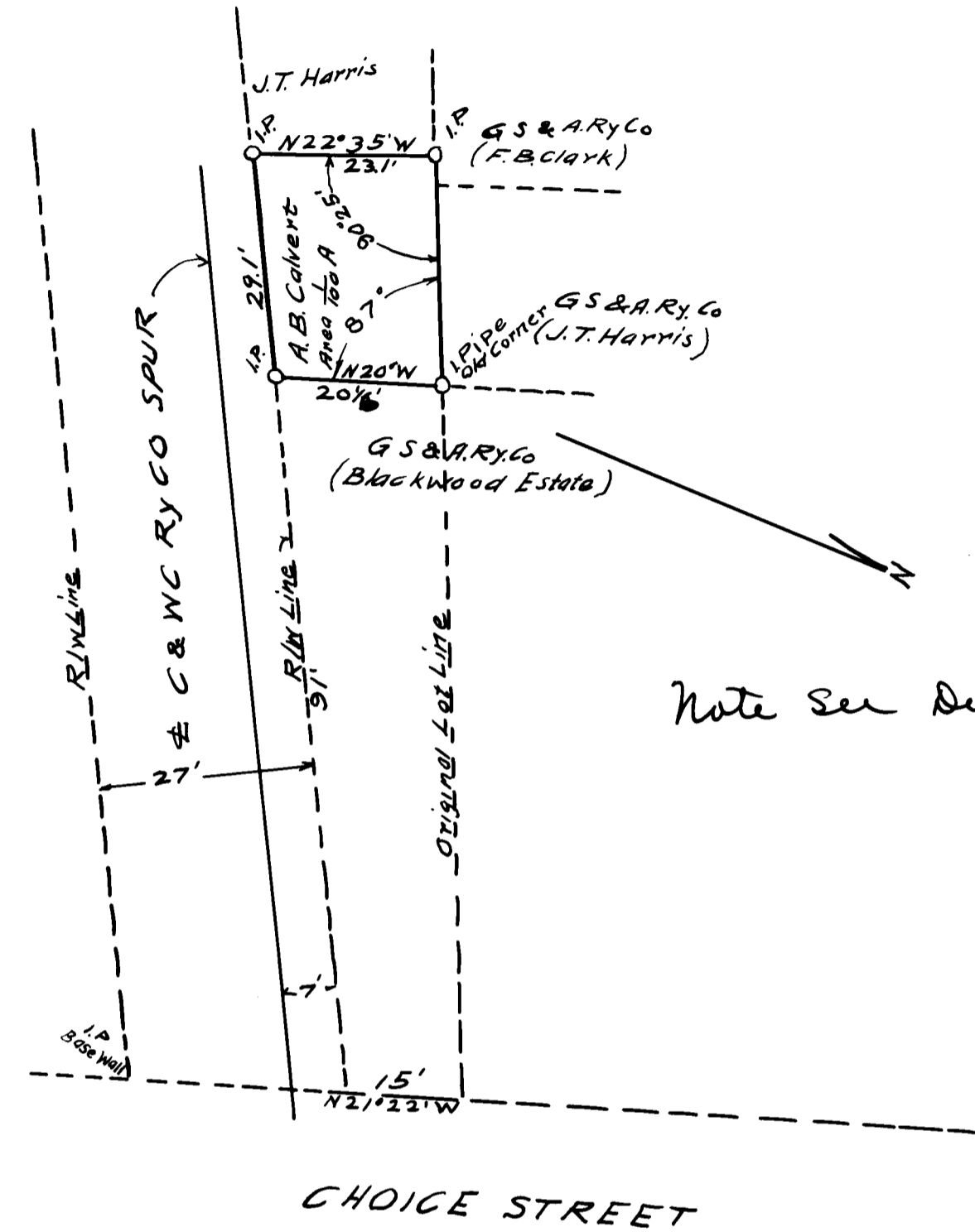


175

Ex Parte  
Greenville, Spartanburg & Anderson Ry Co.

Exhibit "A"



Note See Deed Book 5-I- page 175

PIEDMONT AND NORTHERN LINES  
Property MAP

GS & A Ry  
Conveyed by A.B. Calvert to A  
Scale 1" = 20' Jan. 30th 1914  
Office of Res. Engr. 3rd Res'y

Registered, certified & Examined Feby. 4-1914