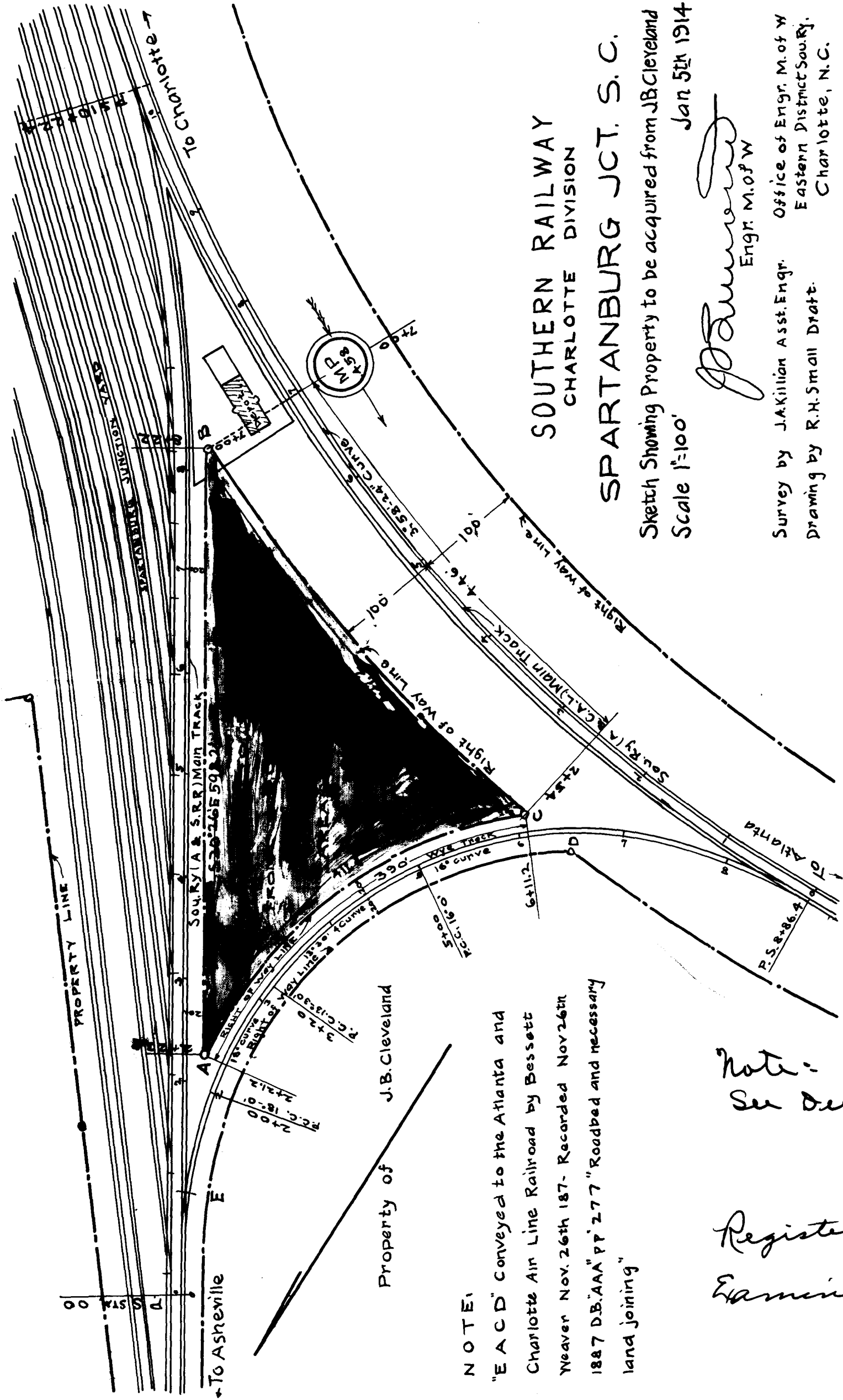


176

Ex Parte
Southern Railway Co.



SOUTHERN RAILWAY
CHARLOTTE DIVISION
SPARTANBURG JCT. S. C.

Sketch Showing Property to be acquired from J.B. Cleveland
Scale 1"=100'

Jan 5th 1914

J. Killian
Engr. M.O.P.W.

Survey by J.A. Killian Asst. Engr. Office of Engr. M. of W.
Drawing by R.H. Small Draft. Eastern District Sou. Ry.
Charlotte, N.C.

NOTE:
"E A C D" conveyed to the Atlanta and
Charlotte Air Line Railroad by Bessett
Weaver Nov. 26th 187- Recorded Nov 26th
1887 D.B. "AAA" PP 277 "Roadbed and necessary
land joining"

Note:-
See Deed Book "5-K" page "172"
Registered, certified and
Examined March 12 - 1914