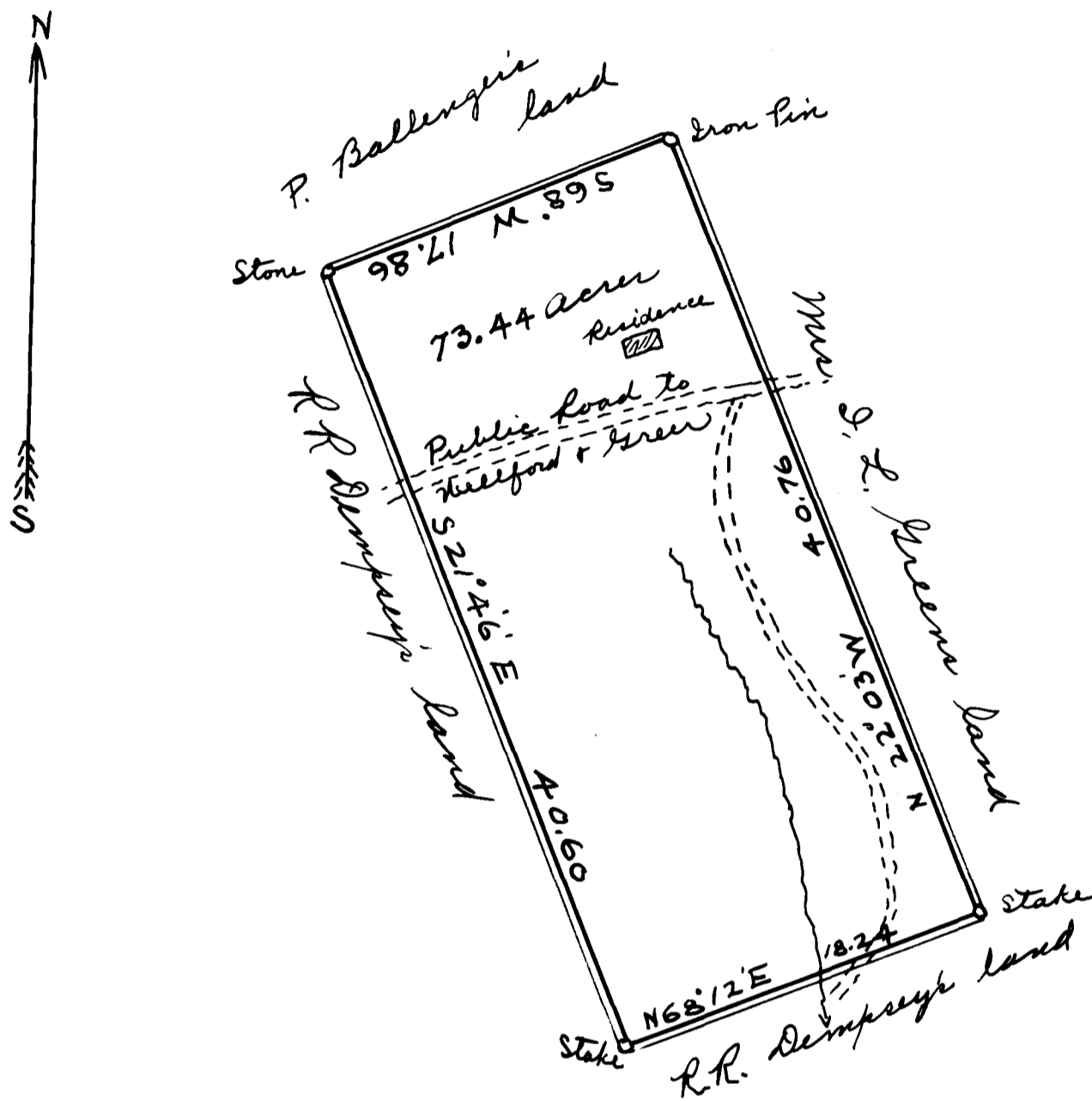


177

Ex Parte
D. Lee Thorne.



Scale: 8 chs. per inch.

State of South Carolina }
Spartanburg County }

This certifies that I have this day re-surveyed for D. L. Thorne a certain tract of land situated in Beech Springs Township, County and State aforesaid and above plat is a true and accurate representation of shape size, marks boundaries etc. This March 4th 1914

J. H. Atkins
Surveyor.

Registered, Certified & Examined April 2 - 1914