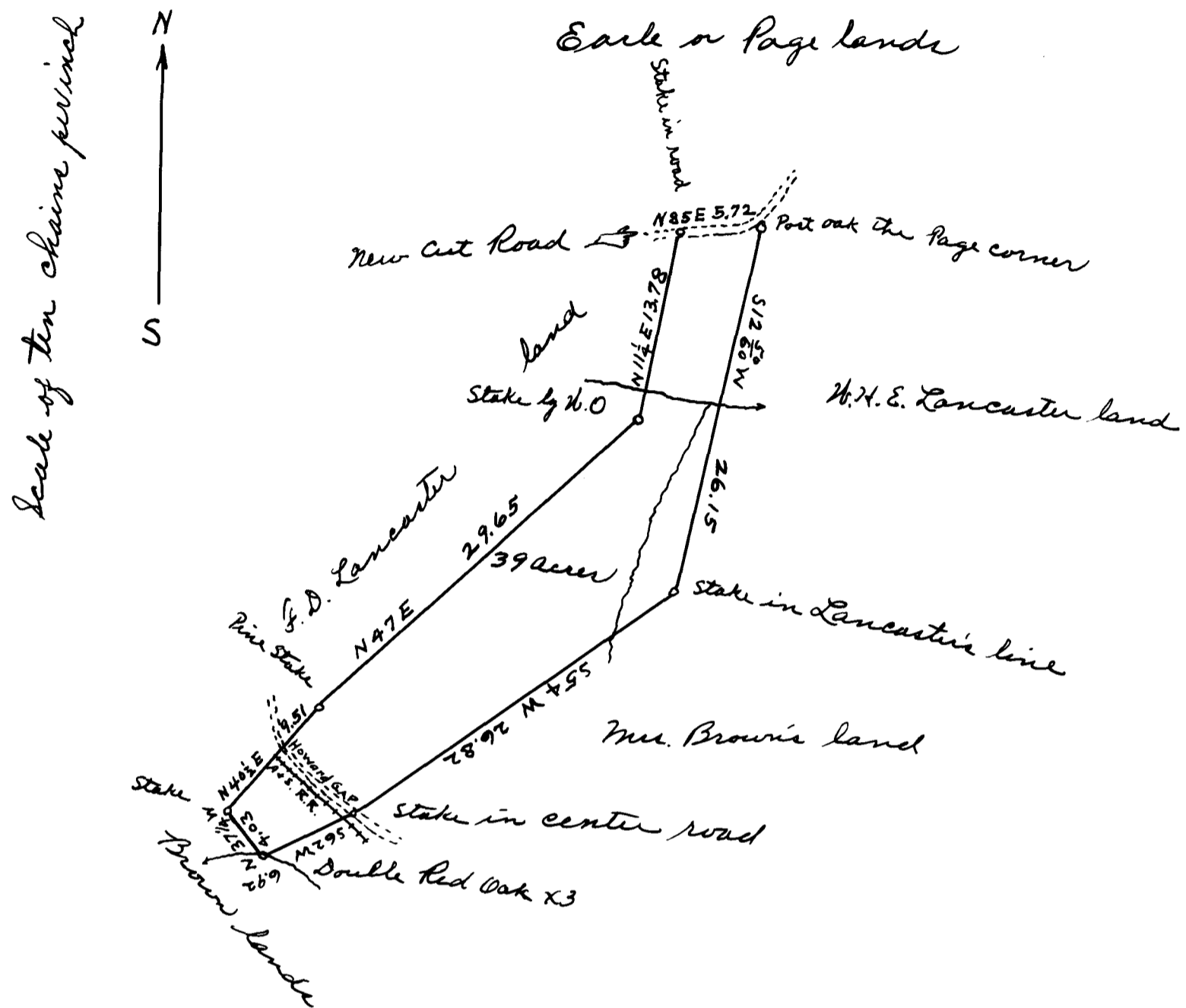


Ex Parte  
Leora H. Hardy



State of South Carolina }  
Spartanburg County }

The above plat correctly represents a lot of land surveyed off from lands of F. D. Lancaster for F. K. Smith, It contains thirty-nine acres. It is situated in Spartanburg County, State of South Carolina and lies on both sides of the Sand A. R. R. and on both sides of the Howard Gap Road and on both sides of branches waters of North and South Pacolet River.

It has the meets and bounds as above shown  
 Surveyed Nov. 30<sup>th</sup> 1908 M & Johnson  
 Surveyor

P.S. The above is further known as a portion of two lots of the James Brown lands. M. E. J.

Registered, Certified & Examined May 1 - 1914