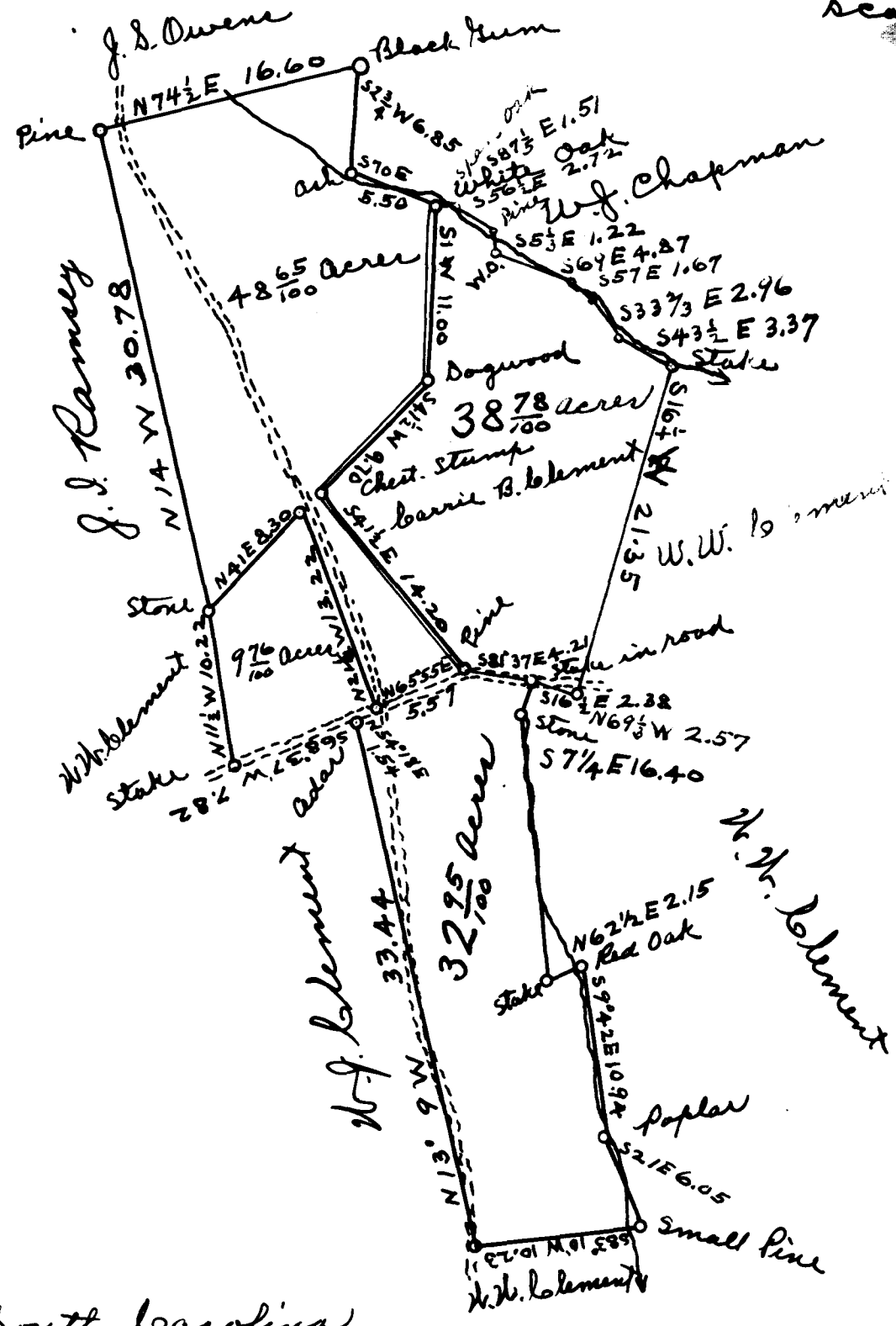


297

*E. Parte*  
*H. G. and Carrie B. Clement*

Scale of ten ch. per inch



State of South Carolina  
 Spartanburg County.

The above plat correctly represents three lots of land belonging to H. G. Clement the lots were surveyed at different times and and bought by him at different times from W. J. Clement as shown by his deeds dated on on Mar. 24<sup>th</sup> 1900 and recorded at Spartanburg, S. C. in office of R. M. C. in Book 7.7.7 page 35; Nov. 27<sup>th</sup> 1907 and recorded in Book 4-M page 364; Dec. 9<sup>th</sup> 1907 and recorded in Book 4-N. page 129, Surveyed by me on the above dates and platted on Dec 22<sup>nd</sup> 1913

*M. E. Johnson*  
 Surveyor.

On Jan. 22<sup>nd</sup> 1914 I have added to H. G. Clement's plat a plat of Mrs. Carrie B. Clement's land. which was surveyed by me Aug. 1909. It is the land deeded to her by Dr. W. J. Chapman and is bounded with red.

*M. E. Johnson*  
 Surveyor.

Registered, Certified & Examined May 11<sup>th</sup> 1914