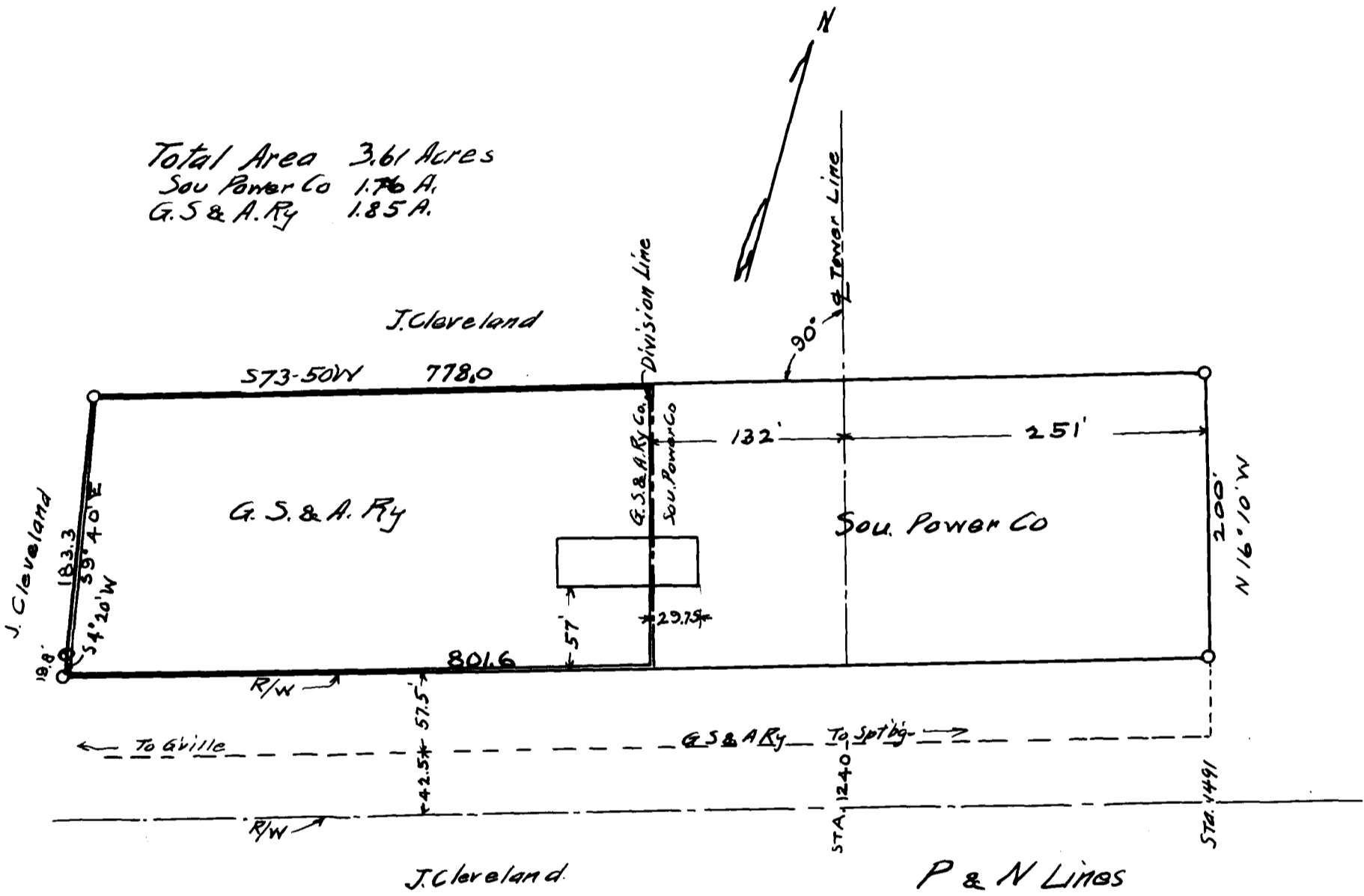


E. Parte
Piedmont & Northern Railway Co.

Note:
See Deed Book 5-K page 341

Total Area 3.61 Acres
Sou Power Co 1.76 A.
G.S. & A. Ry 1.85 A.



J. Cleveland

P & N LINES

G.S. & A. Ry.

Revised 6/29/14.

Sub-Station Property

of

Spartanburg SC

approved Albee

430-14

Eng. M/W

Office Engr. M/W

Greenville, SC

Registered, Certified & Examined August 1st 1914