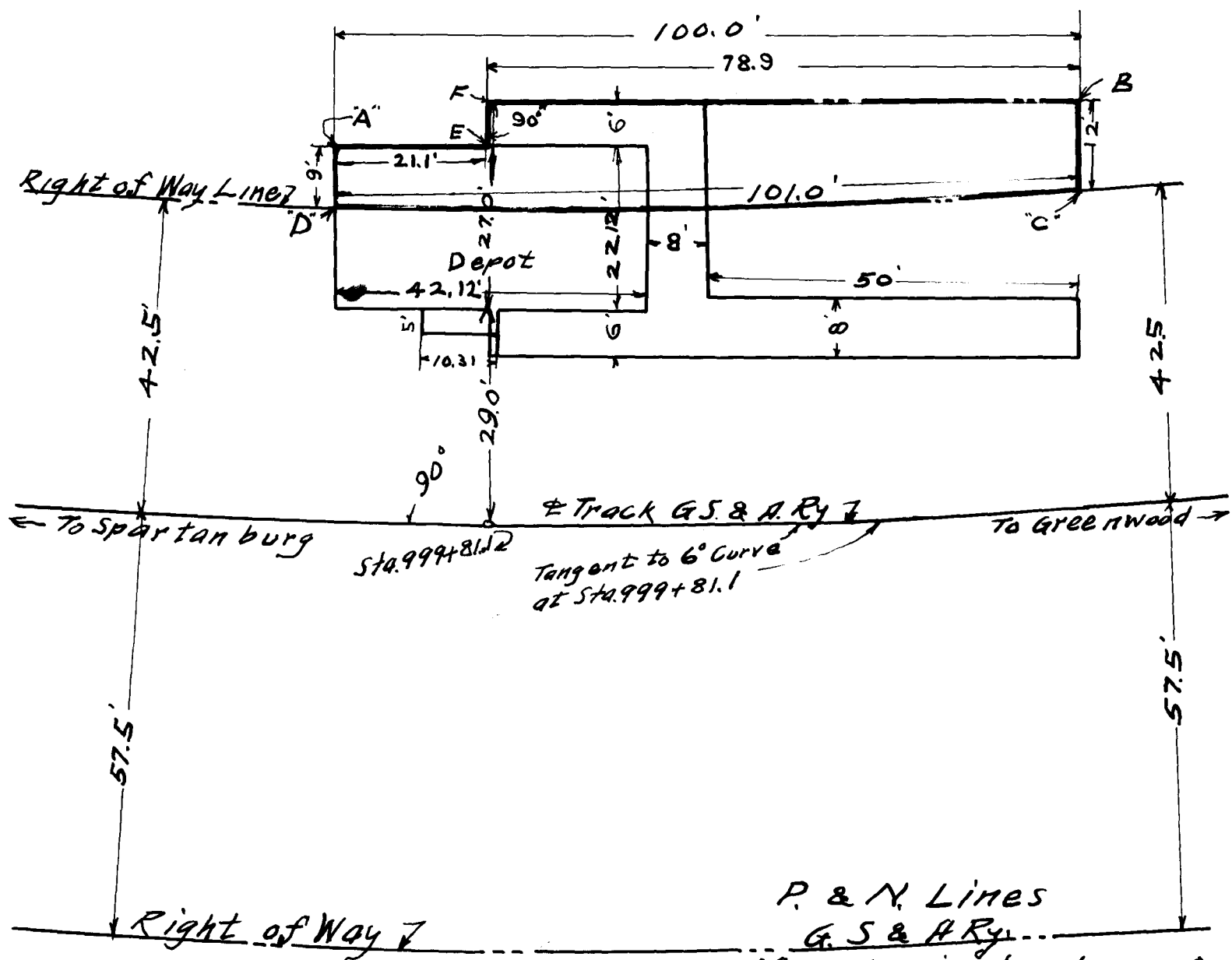


Ex parte
Piedmont & Northern Railway Co.

Note: See Deed Book 5-K page 374



P. & N. Lines
G. S. & N. Ry.
Map showing location of
station at Groce and the
additional Right of Way re-
quired for same.

1" = 20' 6-27-14

Revised 7-16-14 G.L.W.

Approved *W. Lee* Office of Engr. M. of W. $\frac{12}{80}$
Engr. M.J.W. Greenville S.C.

Registered, Certified & Examined Sept. 5-1914