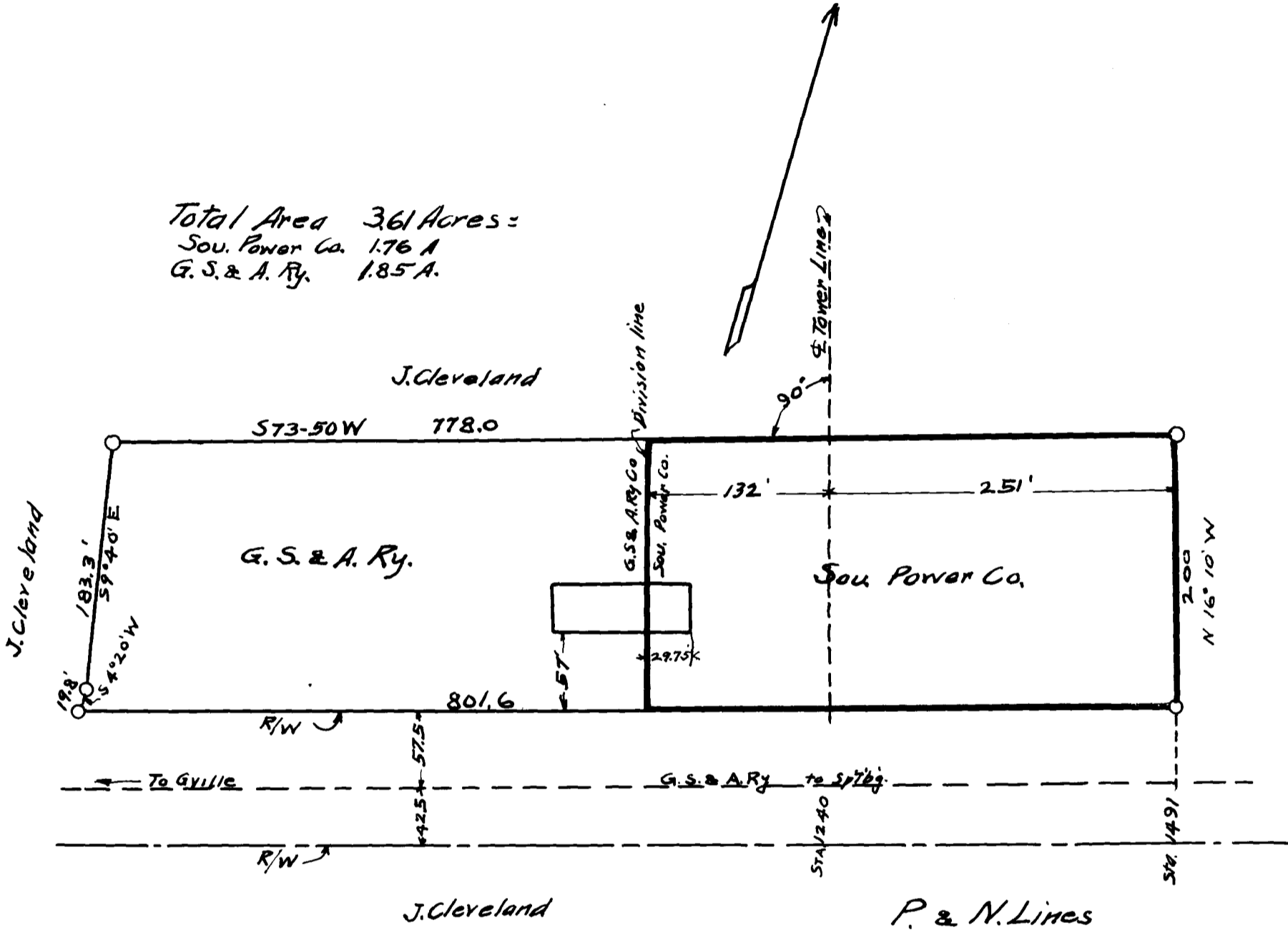


113

EX PARTE  
SOUTHERN POWER CO.

NOTE:—  
SEE DEED BOOK 5-K PAGE 430

Total Area 361 Acres =  
Sou. Power Co. 1.76 A  
G. S. & A. Ry. 1.85 A.



J. Cleveland

P. & N. Lines  
G. S. & A. Ry.

Revised 6/23/14

Sub-Station Property  
of

approved *Al Lee* Spartanburg S.C.  
Eng'r. M/W Office Eng'r. M/W  
4-30-14 Greenville, S.C.

Registered, Certified & Examined Nov. 19<sup>th</sup> 1914