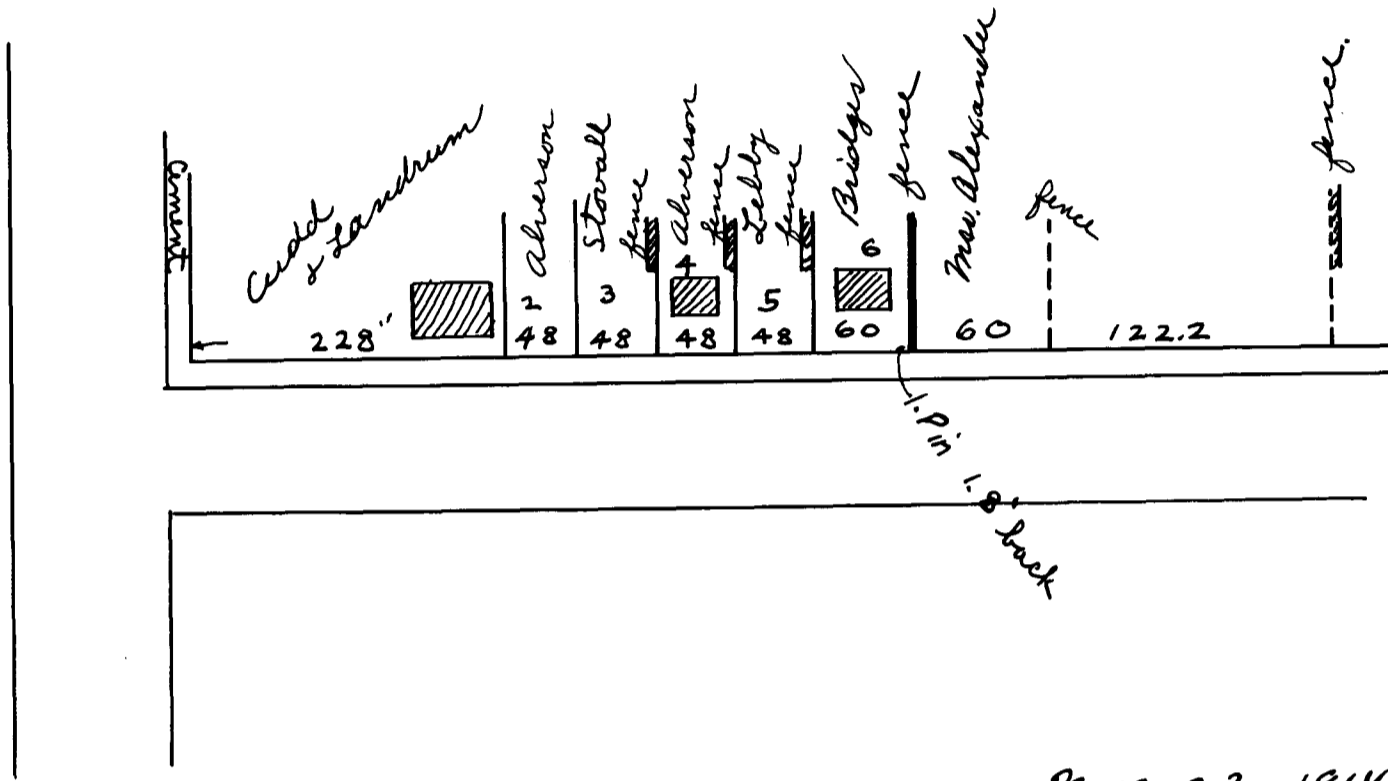


4 Parts
 T.E. + Bertha L. Sumner



Nov. 23-1914

With the assistance of A. L. Willard I have measured the frontages of lots on West side of Hall Street, beginning at the inner line of cement sidewalk on East Main Street and find same as per sketch below.

Note no marks found.

H. Stibbling
 Surveyor

Registered, Certified & Examined Dec. 3-1914