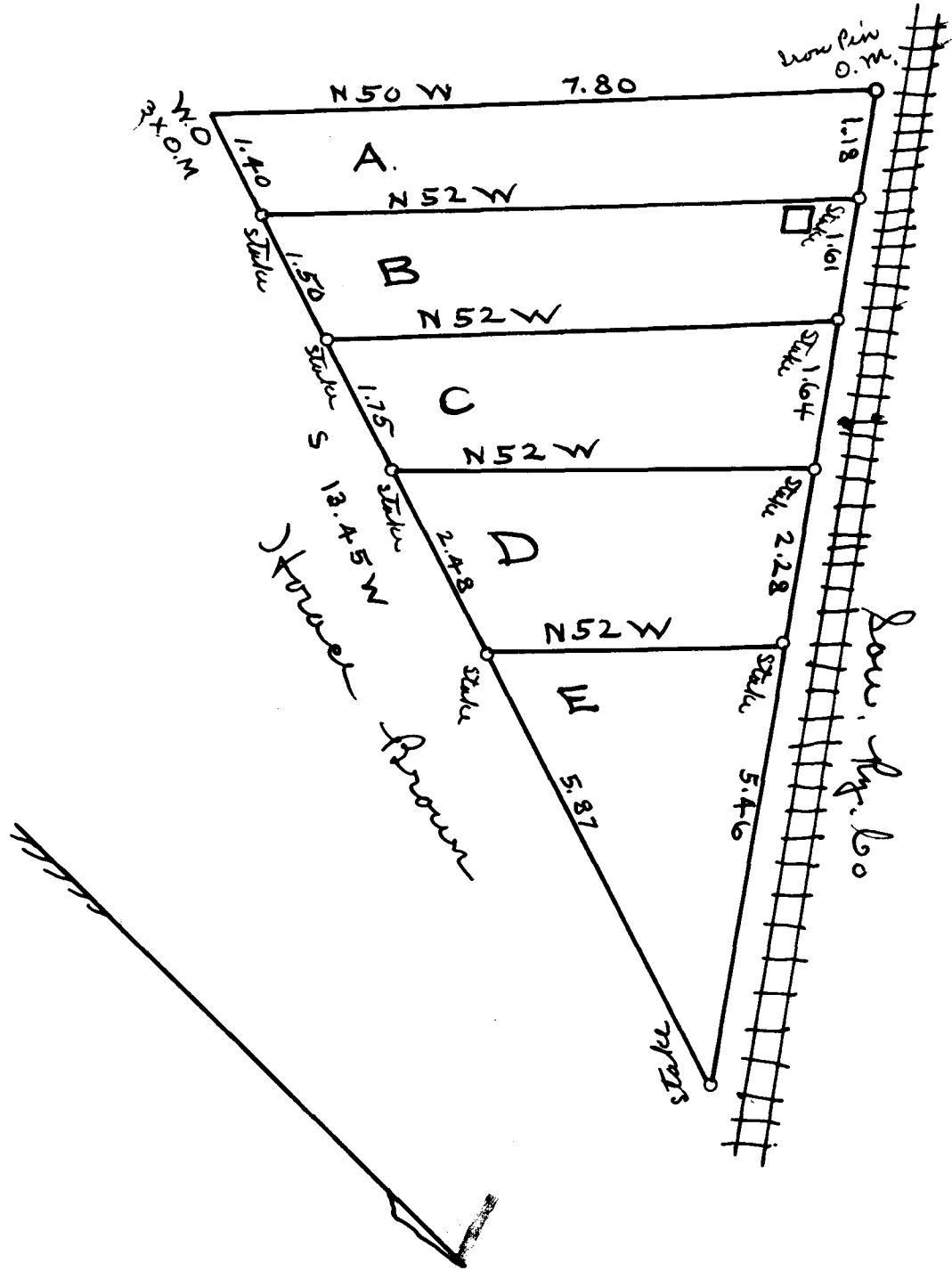


EX PARTE

TIMOTHY JOHNSON ESTATE



The above represents subdivision of lot No. 1 of the Bobo Wilkins tract near Compens, S. C. lying on the east side of Sou. R. R. The lots above are numbered & designated as Lots A, B, C, D & E, each containing a little less than an acre.

Nov. 22-1913

S. J. Dupré  
Sur.

Registered, certified & examined Jan. 11<sup>th</sup> 1915