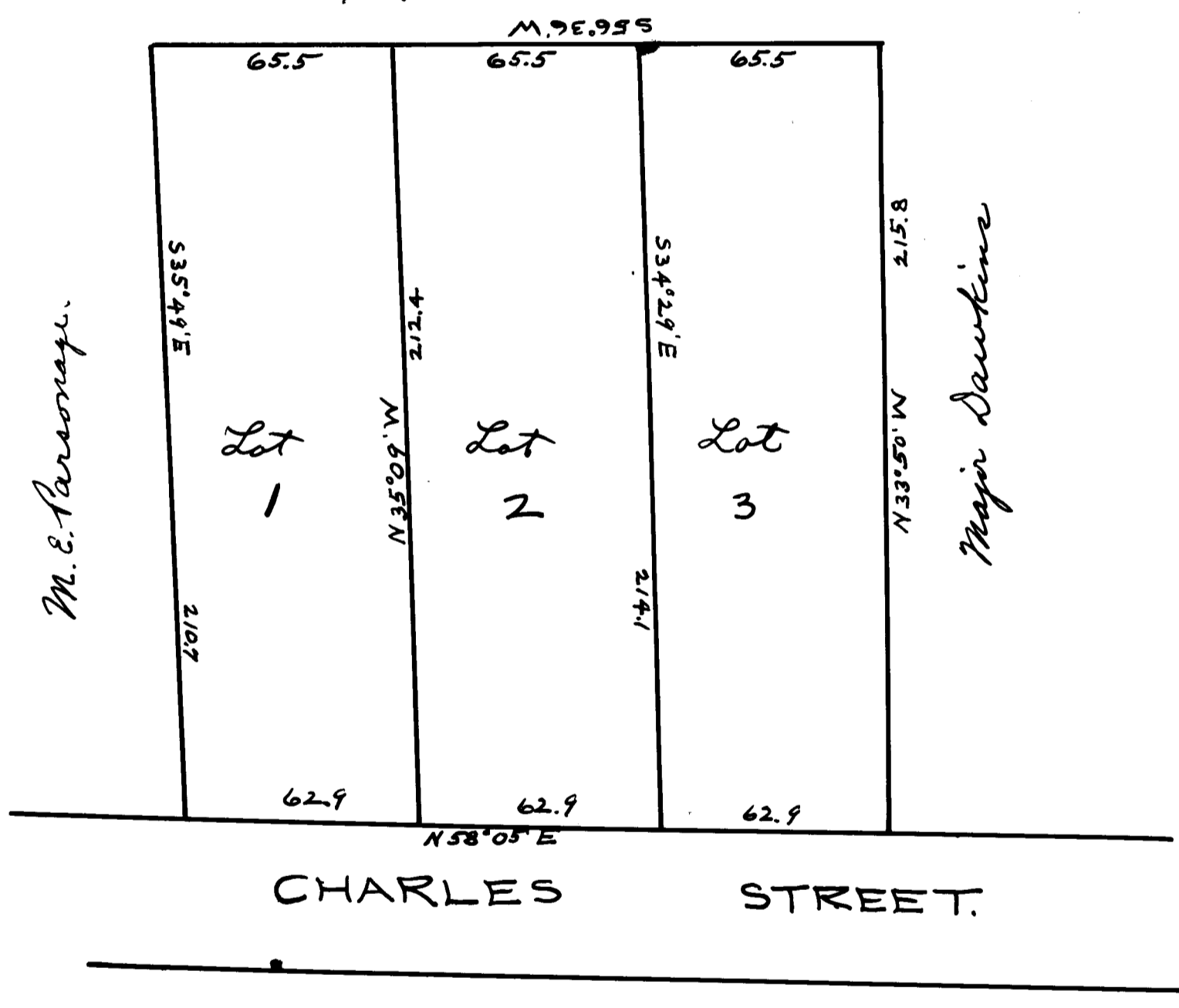


EX PARTE
ANNE E. WALKER

Property of the heirs of
N. E. Walker
Spartanburg, S.C.

S.O.R.R.



This is to certify that we have surveyed and subdivided the tract of land represented by this plat which is within the corporate limits of the City of Spartanburg and on the north side of Charles St. and that all marks, metes and bounds are correctly represented hereon

Surveyed Sept. 19-1900. By.
A. Madole + Son

Registered, Certified + Examined March 10-1915